

JUN • JUL • AUG 2019 FREE!

**RP**  
**LC** Regina  
Public  
Library

# At the Library

PROGRAMS & HAPPENINGS



**STEAM PROGRAMS**  
**SUMMER READING PARTIES**  
**CHILDREN'S ENTERTAINERS**  
**REGINALIBRARY.CA**

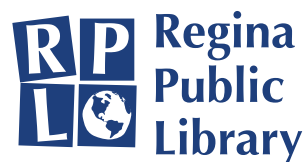




# SUMMER READING CONTEST JUL 1 TO AUG 31

**Win whenever you read!**

Register online at [reginalibrary.ca/summerreading](http://reginalibrary.ca/summerreading) and download the Beanstack app today!



### Regina Public Library Board

Sean Quinlan, Chair  
 Barbara March-Burwell, Vice Chair  
 Jeff Barber, Secretary to the Board  
 Mayor Michael Fougere  
 Councillor Sharron Bryce  
 Marj Gavigan, Starla Grebinski, Cindy Kobayashi, Phyllis Lerat, Olajumoke Oni

### About the RPL Board of Directors

The Regina Public Library is established under the provisions of The Public Libraries Act, 1996. The general management, regulation, and control of the Library is vested in the Regina Public Library Board.

The Board consists of the Mayor and eight members of the public appointed by the City Council for two-year terms.

For those interested in learning more about the Board's role and its contributions and oversight, the public is welcome to attend board meetings. Our board meetings calendar, as well as the minutes from past board meetings, are available at [reginalibrary.ca](http://reginalibrary.ca).

### Our Mission

#### Regina Public Library Board

The Regina Public Library is a board governed, integrated cultural organization that exists to provide opportunities for discovery and learning in an inclusive, customer-centred, and safe environment. Specifically, the RPL offers:

- Free and open access to resources
- Community space where people and ideas meet
- Programs and services that support reading, curiosity and discovery
- Community opportunities that complement and strengthen the public library offering

### We want to hear from you!

RPL welcomes comments and suggestions on Library services, programs and collections. Your input assists in planning the future direction of public library service in Regina. Send your comments via email to: [mac@reginalibrary.ca](mailto:mac@reginalibrary.ca)

Cover photo: Michael Bell Photography

## How to use this guide.

RPL categorizes most of its program offerings by age group: children, teens and adults. Sometimes we offer programs to more than one age group – we'll highlight these in the program descriptions. There are special sections in each issue that feature Aboriginal and Literacy programming, Dunlop Art Gallery exhibitions and programs, RPL in the community, and what's on at the Film Theatre. We also use "advertisements" to highlight significant RPL events and information. In other words, there's lots of cool stuff in here, so browse the entire book and use our online database to check it all out!



Summer Reading Parties page 9



STEAM Programs page 10



Children's Entertainers page 14



Book Clubs page 24

## AT THE LIBRARY:

Your guide to what's happening at RPL.

Children's Programs . . . . .	4
Summer Reading Parties . .	9
STEAM Programs . . . . .	10
Puppet shows. . . . .	14
Children's Films . . . . .	15
Children's Entertainers . .	16
Teen Programs . . . . .	18
Adult Programs . . . . .	22
Book Clubs. . . . .	24
PRIDE programs . . . . .	28
Business Programs . . . . .	34
Indigenous Programs . . . .	36
Literacy Programs . . . . .	37
Dunlop Art Gallery . . . . .	38
Loan Periods & Fines. . . . .	42
Thank-you to our sponsors	43
Locations & Hours . . . . .	44

**R** Registration Required

**D** Drop-In Program

**T** Ticketed: Pick up free tickets at the desk, 30 min. before program

Registration opens at noon on May 24.

## LEARN

	CC • Central Children's Library	CA • Central Library	AL • Albert Branch	CO • Connaught Branch	GB • George Bothwell Branch	GE • Glen Elm Branch	PW • Prince of Wales Branch	RP • Regent Place Branch	SU • Sherwood Village Branch	SU • Sunrise Branch	Page
Children's Paint Afternoon				<b>R</b>							9
Family Storytime	<b>D</b>		<b>D</b>						<b>D</b>		6
Library Lemonade Stand		<b>D</b>									8
Mainly Mother Goose	<b>D</b>										6
Parent and Baby Yoga			<b>R</b>		<b>R</b>						6
Summer Storytime				<b>D</b>							6
Summer Stuffie Sleepover	<b>R</b>		<b>R</b>					<b>R</b>			6
Sunshine Stories and Songs						<b>D</b>					6
Shark Storytime							<b>D</b>				8
Summer Bike Rodeo								<b>D</b>			8
Yoga and Stories	<b>R</b>	<b>R</b>	<b>R</b>	<b>R</b>	<b>R</b>	<b>R</b>	<b>R</b>	<b>R</b>	<b>R</b>		9

## CONNECT

Board Games for Families									<b>D</b>		8
Coin Hawks	<b>D</b>										7
Family Book Club	<b>R</b>										7
Gamers Guild		<b>D</b>									7
Horcrux Scavenger Hunt							<b>D</b>				8
Lego Play		<b>D</b>					<b>D</b>				7
Make Your Own Chia Pet							<b>R</b>				7
Monthly Movie Matinee		<b>D</b>									7
Reading Raptors Family Book Club									<b>R</b>		7
Storybag Drop-In	<b>D</b>					<b>D</b>			<b>D</b>		6

## DUNLOP ART GALLERY PROGRAMS

Afterschool Gardening						<b>D</b>					7
Art Adventures: De Stijl Still Life				<b>D</b>							8
Art Adventures: Pop Art Portraits		<b>D</b>									6
Art Adventures: Surrealist Games									<b>D</b>		9
Art and Stories: Animals					<b>D</b>						6
Art and Stories: Genres of Art							<b>D</b>				6
Meandering Accordion Book: Caterpillars, Snakes and More				<b>D</b>							8
Stop Motion Animation								<b>D</b>			9
The Art of Papermaking					<b>D</b>						7

## Check our Website

Please note: not all programs are included in the guide due to publishing timelines. Visit our online program module for a complete list of RPL programs: [reginalibrary.ca/attend](http://reginalibrary.ca/attend)



# CHILDREN'S

**R** Registration Required

**D** Drop-In Program

**T** Ticketed: Pick up free tickets at the desk, 30 min. before program

Registration opens at noon on May 24.

## FILM THEATRE PROGRAMS

Cinema Under the Stars: Art Party

**D**

Victoria Park

8

## FEATURED

Children's Entertainers

**T**

**T**

**T**

**T**

**T**

**T**

**T**

**T**

16

Preschool Films

**T**

15

School-age Films

**T**

15

PRIDE programs

**D**

7

Puppet Shows

**T**

**T**

**T**

**T**

**T**

**T**

**T**

**T**

14

STEAM

**R**

**R**

**R**

**R**

**R**

**R**

**R**

**R**

10

Summer Reading Parties

**D**

**D**

**D**

**D**

**D**

**D**

**D**

9

CC • Central Children's Library

CA • Central Library

AL • Albert Branch

CO • Connaught Branch

GB • George Bothwell Branch

GE • Glen Elm Branch

PW • Prince of Wales Branch

RP • Regent Place Branch

SU • Sherwood Village Branch

SU • Sunrise Branch

Page



## PARENT AND BABY YOGA **R**

Enjoy stretching, bonding with your baby and socializing with other parents or caregivers. Please bring a yoga mat or towel and a few favorite toys for baby. Facilitated by Robyn Clay.

SAT, JUN 1 • 2:00-3:00PM  
Prince of Wales Branch

SUN, JUL 14 • 2:00-3:00PM  
Connaught Branch

## STORYBAG DROP-IN **D**

Ages 2 to 5. Enjoy a storybag with your child. Storybags have a theme and contain books, puppets, games, puzzles, toys and rhymes.

MON, JUN 3-AUG 26 • 10:00-12:00PM  
FRI, JUN 7-AUG 30 • 10:00-12:00PM  
Prince of Wales Branch

WED, JUL 3-AUG 21 • 9:30-12:00PM  
SAT, JUL 6-AUG 24 • 12:00-5:00PM  
Central Children's

FRI, JUL 5-AUG 30 • 9:30-3:30PM  
MON, JUL 8-AUG 26 • 9:30-3:30PM  
Sunrise Branch

## ART AND STORIES: GENRES OF ART **D**

Toddlers and babies come with your adults and join us in exploring the Regent Place Branch artworks, a reading of Susan Verde's *The Museum*, and try out a variety of art materials!

TUE, JUN 4 • 10:00-11:00AM  
Regent Place Branch  
Program Room

## FAMILY STORYTIME **D**

Ages 2 to 5. Enjoy stories, songs, rhymes, and other fun activities with your child. No session August 6.

TUE, JUL 2-AUG 27 • 1:00-1:30PM  
Connaught Branch

THU, JUL 4-AUG 15 • 10:30-11:00AM  
Central Children's

SAT, JUN 8 • 10:00-10:30AM  
Sunrise Branch

## MAINLY MOTHER GOOSE **D**

Ages 2 and under. An interactive program for parents and babies featuring songs, rhymes, bounces and books.

SAT, JUL 6-AUG 17 • 10:30-11:00AM  
MON, JUL 8-AUG 12 • 10:30-11:00AM  
Central Children's

## SUNSHINE STORIES AND SONGS **D**

Ages 5 and under, accompanied by an adult. Enjoy a parent-child program filled with songs, rhymes, stretches, and books in the Prince of Wales Garden. No session August 6.

TUE, JUL 9-AUG 27 • 10:30-11:00AM  
Prince of Wales Branch

## SUMMER STUFFIE SLEEPOVER **R**

For families. Enjoy a storytime with your stuffie, then leave it at the library for a sleepover. Pick up your stuffie in the afternoon and learn about its overnight adventures.

TUE, JUL 23 • 6:30-7:30PM  
Sherwood Village Branch

WED, AUG 14 • 6:30-7:15PM  
Connaught Branch

WED, AUG 28 • 6:30-7:15PM  
Central Children's

## ART AND STORIES: ANIMALS **D**

Toddlers and babies come with your adults and join us in exploring the Glen Elm artworks, a reading of Lucy Cousins' *Hooray for Birds*, and create some wacky animal puppets!

TUE, AUG 13 • 10:00-11:00AM  
Glen Elm Branch  
Program Room

## SUMMER STORYTIME **D**

Ages 2 to 6. Enjoy summertime stories, songs, rhymes, and crafts that celebrate hot weather.

MON, AUG 19 • 2:00-3:00PM  
George Bothwell Branch  
Flex Room

## ART ADVENTURES: POP ART PORTRAITS **D**

Ages 5 to 9. Join us for an artwork scavenger hunt around the library, learn about Pop Art, and create a colourful portrait!

SAT, JUN 1 • 1:30-3:00PM  
Albert Branch



## AFTERSCHOOL GARDENING **D**

Ages 8 to 13. Learn how to plan, plant, and care for a garden as you help prepare the Prince of Wales Branch garden for the growing season.

MON, JUN 3-24 • 3:30-4:30PM  
Prince of Wales Branch

## THE ART OF PAPERMAKING **D**

Join Helen O'Connor for a papermaking demonstration. Learn how to form sheets of paper from various plants, weeds, oriental fibres, cotton linens and recycled papers.

WED, JUN 5 • 3:30-5:30PM  
Glen Elm Branch

## MONTHLY MOVIE MATINEE **D**

Enjoy a family friendly movie.

SUN • 1:30-3:30PM  
JUN 9: *Fantastic Beasts and Where to Find Them*  
JUL 14 *Fantastic Beasts: The Crimes of Grindelwald*  
AUG 11 *Bumblebee*  
Albert Branch

## READING RAPTORS FAMILY BOOK CLUB **R**

Ages 8 to 12. Join this family book club with your children. To register, call 306.777.6095 or email [hparker@reginalibrary.ca](mailto:hparker@reginalibrary.ca).

SUN, JUN 9 • 2:30-3:30PM  
Sunrise Branch

## DRAG QUEEN STORY HOUR **D**

For families. Celebrate Queen City Pride Festival by participating in a storytime hosted by drag queens. Enjoy stories, rhymes and songs.

SUN, JUN 16 • 2:00-3:00PM  
Regent Place Branch

## COIN HAWKS **D**

Ages 6 and over. Learn about coin collecting so you can start your collection. Facilitated by Troy Zimmer from Coin Hawks.

WED, JUN 19 • 6:30-8:00PM  
Central Children's

## GAMERS GUILD **D**

Ages 10 and over. Play video games ranging from retro titles to modern classics. Choose your challenge and enjoy some pass-and-play fun.

WED, JUN 19, JUL 17 AND AUG 21  
• 7:00-8:30PM  
Albert Branch

## FAMILY BOOK CLUB **R**

Ages 8 to 12. Join this family book club with your children. To register phone 306.777.6030 or email: [tbanadyga@reginalibrary.ca](mailto:tbanadyga@reginalibrary.ca).

THU, JUN 20, JUL 18 AND AUG 22  
• 6:30-7:30PM  
Central Children's

## LEGO PLAY **D**

Ages 6 and over. Construct fabulous creations using the Library's LEGO collection.

SAT, JUN 8, JUL 13 AND AUG 10  
• 1:30-3:30 PM  
Albert Branch

WED, JUN 26, JUL 24 AND AUG 28  
• 3:30-8:30PM  
Regent Place Branch

## MAKE YOUR OWN CHIA PET **R**

Ages 5 and over. Make your own chia pet to take home using a pop bottle, chia seeds, soil, and craft supplies. All materials provided.

SAT, JUN 29 • 2:00-2:30PM  
Regent Place Branch

# CHILDREN'S PROGRAMS

Registration opens at noon on May 24.

## BOARD GAMES FOR FAMILIES **D**

Ages 3 and over. Play with a variety of board games and make new friends. Games provided.

SUN, JUN 9 • 1:00-4:00PM

WED, JUL 3-AUG 28 • 1:00-4:00PM

Sunrise Branch

## CINEMA UNDER THE STARS: ART PARTY **D**

Meet us at the arts table in Victoria Park for family-friendly art activities as you get settled in for outdoor movie watching adventures. In partnership with Regina Downtown Business Improvement.

WED, JUL 3-24 AND AUG 14 AND 21

• 6:30-8:00PM

Victoria Park

## LIBRARY LEMONADE STAND **D**

Ages 12 and under. Celebrate the summer at the Library Lemonade Stand with a cool glass of lemonade, a new book in the shade, and a fun outdoor activity.

FRI, JUL 5-AUG 30 • 10:00-12:00PM

Albert Branch

## MEANDERING ACCORDION BOOK: CATERpillars, SNAKES AND MORE **D**

Children will decorate and fold their meandering books to produce wonderful sparkly caterpillars or silly snakes that tell funny stories.

SAT, JUL 6 • 10:00-11:30AM

George Bothwell Branch

## SUMMER BIKE RODEO **D**

For Families. Join SGI's Safety Squad for a helmet fitting station and play a fun traffic safety game. Learn basic bike maintenance with Dutch Cycle. Decorate your bike at our bling station.

TUE, JUL 9 • 6:00-7:30PM

Sherwood Village

## ART ADVENTURES: DE STIJL STILL LIFE **D**

Ages 5 to 9. Join us for an artwork scavenger hunt around the library, learn about Cubism, and create an artwork using Cubist techniques!

SAT, JUL 20 • 1:30-3:00PM

George Bothwell Branch

## SHARK STORYTIME **D**

Ages 4 to 8. Join us for a shark-themed storytime featuring books, rhymes, songs, and crafts that celebrate this spectacular underwater animal.

FRI, JUL 26 • 10:30-11:30AM

Regent Place Branch

## HORCRUX SCAVENGER HUNT **D**

For families. Celebrate Harry Potter's birthday by following the magical clues to discover all seven horcruxes hidden throughout the library. Win a prize for finding them all.

WED, JUL 31 • 1:00-9:00PM

Regent Place Branch



## CREATION CUBE: EXPLORE, CONNECT, DISCOVER **D**

The Creation Cube is an interactive exploration space unique to our George Bothwell Branch.

Each month it features new installations, activities and programs that encourage imaginative play and hands-on discovery for all ages.

Drop in at the branch or call 306.777.6091 to learn more about what's happening in the Creation Cube this month.





**LEVEL UP!**

**SUMMER READING PARTIES D**  
Ages 5 to 12. Drop-in and celebrate the joy of reading. Read and explore a variety of fun activity stations with your friends.

**FRI, JUL 5 • 10:00AM-12:00PM**  
Albert

**SAT, JUL 6 • 2:00-4:00PM**  
George Bothwell

**SAT, JUL 27 • 2:00-4:00PM**  
Glen Elm

**FRI, AUG 9 • 10:00AM-12:00PM**  
Central Children's

**SAT, AUG 10 • 1:00-3:00PM**  
Regent Place

**THU, AUG 15 • 2:30-4:30PM**  
Sunrise

**SAT, AUG 17 • 10:00AM-12:00PM**  
Sherwood Village

## CHILDREN'S PAINT AFTERNOON R

Ages 6 and over. Learn painting techniques while you create a bird themed piece of artwork.

**MON, AUG 12 • 2:00-3:00PM**  
George Bothwell Branch

## STOP MOTION ANIMATION D

Ages 8 to 13. Learn the basics of stop-motion animation, and create your very own short film or GIF! Bring along your favourite small action figures or trinkets to star in your animation.

**TUE, AUG 20 • 1:00-3:30PM**  
Sherwood Village Branch

## ART ADVENTURES: SURREALIST GAMES D

Ages 5 to 9. Join us for an artwork scavenger hunt around the library, learn about Surrealism, and create unpredictably kooky artworks while playing Surrealist games!

**SAT, AUG 24 • 1:30-3:00PM**  
Sunrise Branch

## YOGA AND STORIES R

Ages 5 to 8. Enjoy yoga-themed stories and learn some beginner poses. Craft included.

**SUN, AUG 25 • 2:00-2:45PM**  
Sherwood Village Branch

**MON, AUG 26 • 10:30-11:15AM**  
Prince of Wales Branch

**MON, AUG 26 • 2:00-2:45PM**  
Central Children's

**TUE, AUG 27 • 10:30-11:15AM**  
Regent Place Branch

**TUE, AUG 27 • 2:00-2:45PM**  
Glen Elm Branch

**WED, AUG 28 • 10:30-11:15AM**  
Albert Branch

**WED, AUG 28 • 2:00-2:45PM**  
George Bothwell Branch

**THU, AUG 29 • 10:30-11:15AM**  
Sunrise Branch

**THU, AUG 29 • 2:00-2:45PM**  
Connaught Branch

# STEAM PROGRAMS

Registration opens at noon on May 24.



## SILLY SOCK PUPPETS **R**

Ages 6 to 12. Craft a whimsical puppet using a sock and your imagination.

WED, JUL 3 • 10:30-11:30AM  
Albert Branch

WED, JUL 3 • 2:00-3:00PM  
Sherwood Village Branch

THU, JUL 4 • 2:00-3:00PM  
Prince of Wales Branch

FRI, JUL 5 • 10:30-11:30AM  
Regent Place Branch

FRI, JUL 5 • 2:00-3:00PM  
George Bothwell Branch

TUE, JUL 9 • 10:30-11:30AM  
Glen Elm Branch

THU, JUL 11 • 10:30-11:30AM  
Sunrise Branch

THU, JUL 11 • 2:00-3:00PM  
Central Children's

FRI, JUL 12 • 2:00-3:00PM  
Connaught Branch

## COLOURFUL COLLAGRAPHY **R**

Ages 9 to 12. Learn about printmaking and create a colourful masterpiece of your own. Supplies provided.

MON, JUL 8 • 10:30AM-12:00PM  
Sherwood Village Branch

MON, JUL 8 • 2:00-3:30PM  
Central Children's

TUE, JUL 9 • 10:30AM-12:00PM  
Albert Branch

TUE, JUL 9 • 2:00-3:30PM  
Sunrise Branch

WED, JUL 10 • 2:00-3:30PM  
George Bothwell Branch

THU, JUL 11 • 10:30AM-12:00PM  
Glen Elm Branch

THU, JUL 11 • 2:00-3:30PM  
Connaught Branch

FRI, JUL 12 • 10:30AM-12:00PM  
Prince of Wales Branch

FRI, JUL 12 • 2:00-3:30PM  
Regent Place Branch

## OUT OF THIS WORLD **R**

Ages 5 to 12. Discover the technologies that astronauts use to learn about celestial bodies and planets. Presented by the Saskatchewan Science Centre.

MON, JUL 8 • 2:00-3:00PM  
Albert Branch

TUE, JUL 9 • 10:30-11:30AM  
Sunrise Branch

TUE, JUL 9 • 2:00-3:00PM  
Central Children's

WED, JUL 10 • 10:30-11:30AM  
George Bothwell Branch

WED, JUL 10 • 2:00-3:00PM  
Prince of Wales Branch

THU, JUL 11 • 10:30-11:30AM  
Regent Place Branch

THU, JUL 11 • 2:00-3:00PM  
Sherwood Village Branch

FRI, JUL 12 • 10:30-11:30AM  
Connaught Branch

FRI, JUL 12 • 2:00-3:00PM  
Glen Elm Branch





## ROBOTICS FOR KIDS **R**

Ages 6 to 12. Build and program robots using LEGO and software. Discover how to apply computer programming concepts to get your robots moving. Presented by Regina Sylvan Learning.

**MON, JUL 29 • 2:00-3:00PM**  
Albert Branch

**TUE, JUL 30 • 10:30-11:30AM**  
Sunrise Branch

**TUE, JUL 30 • 2:00-3:00PM**  
Central Children's

**WED, JUL 31 • 10:30-11:30AM**  
George Bothwell Branch

**WED, JUL 31 • 2:00-3:00PM**  
Prince of Wales Branch

**THU, AUG 1 • 10:30-11:30AM**  
Regent Place Branch

**THU, AUG 1 • 2:00-3:00PM**  
Sherwood Village Branch

**FRI, AUG 2 • 10:30-11:30AM**  
Connaught Branch

**FRI, AUG 2 • 2:00-3:00PM**  
Glen Elm Branch

## INTO THE DEPTHS **R**

Ages 5 to 12. Participate in a variety of fun activities as you learn about the ocean and how to protect its ecosystems. Presented by the Saskatchewan Science Centre.

**MON, JUL 15 • 2:00-3:00PM**  
Albert Branch

**TUE, JUL 16 • 10:30-11:30AM**  
Sunrise Branch

**TUE, JUL 16 • 2:00-3:00PM**  
Central Children's

**WED, JUL 17 • 10:30-11:30AM**  
George Bothwell Branch

**WED, JUL 17 • 2:00-3:00PM**  
Prince of Wales Branch

**THU, JUL 18 • 10:30-11:30AM**  
Regent Place Branch

**THU, JUL 18 • 2:00-3:00PM**  
Sherwood Village Branch

**FRI, JUL 19 • 10:30-11:30AM**  
Connaught Branch

**FRI, JUL 19 • 2:00-3:00PM**  
Glen Elm Branch

## THE GREAT OUTDOORS **R**

Ages 5 to 12. Engage in various fun activities to learn about Saskatchewan's amazing wilderness, weather and ecosystems. Presented by the Saskatchewan Science Centre.

**MON, JUL 22 • 2:00-3:00PM**  
Albert Branch

**TUE, JUL 23 • 10:30-11:30AM**  
Sunrise Branch

**TUE, JUL 23 • 2:00-3:00PM**  
Central Children's

**WED, JUL 24 • 10:30-11:30AM**  
George Bothwell Branch

**WED, JUL 24 • 2:00-3:00PM**  
Prince of Wales Branch

**THU, JUL 25 • 10:30-11:30AM**  
Regent Place Branch

**THU, JUL 25 • 2:00-3:00PM**  
Sherwood Village Branch

**FRI, JUL 26 • 10:30-11:30AM**  
Connaught Branch

**FRI, JUL 26 • 2:00-3:00PM**  
Glen Elm Branch



## DJEMBE DRUM WORKSHOP **R**

Ages 7 to 12. Use djembe drums and other percussion instruments to learn the basics of music and rhythm. Presented by Joanne Crofford from Boomtown Drums.

**MON, AUG 5 • 2:00-3:00PM**  
Albert Branch

**TUE, AUG 6 • 10:30-11:30AM**  
Sunrise Branch

**TUE, AUG 6 • 2:00-3:00PM**  
Central Children's

**WED, AUG 7 • 10:30-11:30AM**  
George Bothwell Branch

**WED, AUG 7 • 2:00-3:00PM**  
Prince of Wales Branch

**THU, AUG 8 • 10:30-11:30AM**  
Regent Place Branch

**THU, AUG 8 • 2:00-3:00PM**  
Sherwood Village Branch

**FRI, AUG 9 • 10:30-11:30AM**  
Connaught Branch

**FRI, AUG 9 • 2:00-3:00PM**  
Glen Elm Branch

## CODING WITH ROBOTS **R**

Ages 7 to 12. Enter the world of coding using Edison Robots and Ozobots to complete a series of discovery challenges. Presented by EYES (Educating Youth in Engineering and Science).

**MON, AUG 12 • 2:00-3:30PM**  
Albert Branch

**TUE, AUG 13 • 10:30AM-12:00PM**  
Sunrise Branch

**TUE, AUG 13 • 2:00-3:30PM**  
Central Children's

**WED, AUG 14 • 10:30AM-12:00PM**  
George Bothwell Branch

**WED, AUG 14 • 2:00-3:30PM**  
Prince of Wales Branch

**THU, AUG 15 • 10:30AM-12:00PM**  
Regent Place Branch

**THU, AUG 15 • 2:00-3:30PM**  
Sherwood Village Branch

**FRI, AUG 16 • 10:30AM-12:00PM**  
Connaught Branch

**FRI, AUG 16 • 2:00-3:30PM**  
Glen Elm Branch

## ROLLER COASTER CREATIONS **R**

Ages 7 to 12. Create a fantastic roller coaster using a kit and the help of your teammates. Follow the Engineering Design Process to design, build and test your creation. Presented by Engineering for Kids.

**MON, AUG 19 • 2:00-3:00PM**  
Albert Branch

**TUE, AUG 20 • 10:30-11:30AM**  
Sunrise Branch

**TUE, AUG 20 • 2:00-3:00PM**  
Central Children's

**WED, AUG 21 • 10:30-11:30AM**  
George Bothwell Branch

**WED, AUG 21 • 2:00-3:00PM**  
Prince of Wales Branch

**THU, AUG 22 • 10:30-11:30AM**  
Regent Place Branch

**THU, AUG 22 • 2:00-3:00PM**  
Sherwood Village Branch

**FRI, AUG 23 • 10:30-11:30AM**  
Connaught Branch

**FRI, AUG 23 • 2:00-3:00PM**  
Glen Elm Branch



## BUILD WITH BRICKS 4 KIDZ **R**

Ages 5 to 11. Build fantastic LEGO structures as you explore architectural and engineering concepts with Bricks 4 Kidz.

**MON, AUG 26 • 2:00-3:00PM**  
Albert Branch

**TUE, AUG 27 • 10:30-11:30AM**  
Sunrise Branch

**TUE, AUG 27 • 2:00-3:00PM**  
Central Children's

**WED, AUG 28 • 10:30-11:30AM**  
George Bothwell Branch

**WED, AUG 28 • 2:00-3:00PM**  
Prince of Wales Branch

**THU, AUG 29 • 10:30-11:30AM**  
Regent Place Branch

**THU, AUG 29 • 2:00-3:00PM**  
Sherwood Village Branch

**FRI, AUG 30 • 10:30-11:30AM**  
Connaught Branch

**FRI, AUG 30 • 2:00-3:00PM**  
Glen Elm Branch



# BE THE DIFFERENCE

**Teen volunteer opportunities for leaders, dreamers and doers.**

- Math, Reading and French Buddies
- Tech Buddies
- Maker Buddies

**[VOLUNTEER@REGINALIBRARY.CA](mailto:VOLUNTEER@REGINALIBRARY.CA)**



[reginalibrary.ca](http://reginalibrary.ca)



## PUPPET SHOWS

Ages 4 and over. Discover the magic of puppetry by joining us for a series of puppet shows. Seating is limited. Pick up your free tickets at the branch 30 minutes before the program begins.

**MON, JUL 8-29, AUG 12 AND 19**

• 10:30-11:00AM

Regent Place Branch

**MON, JUL 8-29, AUG 12 AND 19**

• 2:00-2:30PM

Prince of Wales Branch

**TUE, JUL 9-30, AUG 13 AND 20**

• 10:30-11:00AM

George Bothwell Branch

**TUE, JUL 9-30, AUG 13 AND 20**

• 2:00-2:30PM

Glen Elm Branch

**WED, JUL 10-31, AUG 14 AND 21**

• 10:30-11:00AM

Sherwood Village Branch

**WED, JUL 10-31, AUG 14 AND 21**

• 2:00-2:30PM

Albert Branch

**THU, JUL 11-AUG 1, AUG 15 AND 22**

• 10:30-11:00AM

Connaught Branch

**THU, JUL 11-AUG 1, AUG 15 AND 22**

• 2:00-2:30PM

Sunrise Branch

**FRI, JUL 12-AUG 2, AUG 16 AND 23**

• 10:30-11:00AM

Central Children's

### **JUL 8-12** **THE WOLF'S CHICKEN STEW**

A hungry wolf attempts to fatten a chicken for his stewpot with unexpected results. Based on the book by Keiko Kasza.

### **JUL 15-19** **DOCTOR DE SOTO**

Doctor De Soto is a mouse and an exceptional dentist. He treats all sorts of animals, except those that hurt mice. This kindhearted dentist is faced with a dilemma when a fox seeks his assistance with a painful toothache. How can he help the fox without being eaten? Based on the book by William Steig.

### **JUL 22-26** **THE THREE BILLY GOATS GRUFF**

Three hungry goats want to cross a bridge to eat grass on the other side. Will they outwit the nasty troll who lives beneath the bridge or will they become his dinner? Based on a classic Norwegian folktale.

### **JUL 29-AUG 2** **FROG AND TOAD**

Frog and Toad are friends with very different personalities. Even the most mundane tasks are exciting adventures when these two get together. Based on the books by Arnold Lobel.

### **AUG 12-16** **THE PAPER BAG PRINCESS**

Princess Elizabeth sets off on a quest to save a prince from a dragon. Based on the book by Robert Munsch.

### **AUG 19-23** **HOW I BECAME A PIRATE**

Jeremy Jacob jumps right on board when Braid Beard's pirate crew invites him to join their voyage. Buried treasure, sea chanteys, and pirate curses - who wouldn't go along? Based on Melinda Long's books *How I Became a Pirate* and *Pirates Don't Change Diapers*.





# CHILDREN'S PROGRAMS

Registration opens at noon on May 24.

## PRESCHOOL FILMS

Ages 2 to 5. Watch a series of short films based on children's books. Seating is limited. Pick up your free tickets at the Branch 30 minutes before the program begins.

MON, JUL 8-AUG 26 • 9:45-10:30AM

MON, JUL 8-AUG 26 • 10:45-11:30AM

Central Children's, Film Theatre

July 8

*My Garden*

*Clouette*

*The Tiny Seed*

*Inch by Inch*

*Waiting for Wings*

July 15

*Katie Loves the*

*Kittens*

*Officer Buckle and*

*Gloria*

*Harry the Dirty Dog*

*Groovy Joe: Dance*

*Party Countdown*

*Bark George*

July 22

*Musical Max*

*Good Night, Gorilla*

*Giraffes Can't Dance*

*Me...Jane*

*Wild About Books*

July 29

*Naked Mole Rat*

*Gets Dressed*

*The Emperor's New*

*Clothes*

*We Found a Hat*

August 5

*Leo the Late Bloomer*

*Owen*

*Mary McScary*

*Nanette's Baguette*

*Scaredy Squirrel*

*Yo! Yes?*

August 12

*The Red Hen*

*Wings: A Tale of Two*

*Chickens*

*Chicken Little*

*That Is Not a Good*

*Idea!*

*The Most Wonderful*

*Egg in the World*

*First the Egg*

August 19

*Strega Nona*

*Pete's a Pizza*

*How Do Dinosaurs*

*Eat Their Food?*

*The Duckling Gets a*

*Cookie*

*Lemonade in Winter*

August 26

*Picnic*

*Doctor De Soto*

*A Weekend with*

*Wendell*

*Wallace's Lists*



## SCHOOL-AGE FILMS

For families. Watch a different free feature length film each week. Seating is limited. Pick up your free tickets at the Branch, 30 minutes before the program begins.

WED, JUL 3-AUG 28 • 2:00PM

Connaught Branch

Glen Elm Branch

THU, JUL 4-AUG 29 • 2:00PM

Albert Branch

Regent Place Branch

THU, JUL 4-AUG 29 • 10:00AM

Central Children's

FRI, JUL 5-AUG 30 • 2:00PM

Sunrise Branch

JUL 3-5

***The Lego Ninjago Movie*** | 101min | G

JUL 10-12

***My Little Pony: The Movie*** | 99min | G

JUL 17-19

***Teen Titans Go! To the Movies*** | 88min | PG

JULY 24-26

***Sherlock Gnomes*** | 86min | G

JULY 31-AUGUST 2

***Smallfoot*** | 96min | G

AUGUST 7-9

***The Jungle Bunch*** | 97min | PG

AUGUST 14-16

***Norm of the North: Keys to the Kingdom*** | 91min | PG

AUGUST 21-23

***Early Man*** | 89min | PG

AUGUST 28-30

***Oddball*** | 95min | PG





Seating is limited. Pick up your free tickets at the branch 30 minutes before the program begins.

## LAUGH RIOT T

Ages 4 to 8. Giggle, guffaw and snort as you enjoy Kevin MacKenzie's hilarious stories and action rhymes.

MON, JUL 22 • 2:00-2:30PM  
Regent Place Branch

TUE, JUL 23 • 10:30-11:00AM  
Connaught Branch

TUE, JUL 23 • 2:00-2:30PM  
Albert Branch

WED, JUL 24 • 10:30-11:00AM  
Sunrise Branch

WED, JUL 24 • 2:00-2:30PM  
Central Children's

THU, JUL 25 • 10:30-11:00AM  
George Bothwell Branch

THU, JUL 25 • 2:00-2:30PM  
Glen Elm Branch

FRI, JUL 26 • 10:30-11:00AM  
Sherwood Village Branch

FRI, JUL 26 • 2:00-2:30PM  
Prince of Wales Branch

## OWLS ON TOUR T

Ages 5 and over. Learn about the endangered burrowing owl and its disappearing habitat. Meet a live burrowing owl. Presented by the Saskatchewan Burrowing Owl Interpretive Centre.

FRI, AUG 9 • 2:00-2:30PM  
George Bothwell Branch

FRI, AUG 16 • 10:30-11:00AM  
Sunrise Branch

## SINGING WITH SYLVIA T

Ages 4 to 8. Sing and dance to the beat of Sylvia Chave's interactive and energetic music.

MON, JUL 8 • 2:00-2:30PM  
Regent Place Branch

TUE, JUL 9 • 10:30-11:00AM  
Connaught Branch

TUE, JUL 9 • 2:00-2:30PM  
Albert Branch

WED, JUL 10 • 10:30-11:00AM  
Sunrise Branch

WED, JUL 10 • 2:00-2:30PM  
Central Children's

THU, JUL 11 • 10:30-11:00AM  
George Bothwell Branch

THU, JUL 11 • 2:00-2:30PM  
Glen Elm Branch

FRI, JUL 12 • 10:30-11:00AM  
Sherwood Village Branch

FRI, JUL 12 • 2:00-2:30PM  
Prince of Wales Branch

## MAGIC SHOW T

Ages 4 and over. Laugh and be amazed by Keegan Duck's humorous feats of magic.

MON, JUL 15 • 2:00-2:30PM  
Regent Place Branch

TUE, JUL 16 • 10:30-11:00AM  
Connaught Branch

TUE, JUL 16 • 2:00-2:30PM  
Albert Branch

WED, JUL 17 • 10:30-11:00AM  
Sunrise Branch

WED, JUL 17 • 2:00-2:30PM  
Central Children's

THU, JUL 18 • 10:30-11:00AM  
George Bothwell Branch

THU, JUL 18 • 2:00-2:30PM  
Glen Elm Branch

FRI, JUL 19 • 10:30-11:00AM  
Sherwood Village Branch

FRI, JUL 19 • 2:00-2:30PM  
Prince of Wales Branch



### KARLHEINZ THE BUBBLEMAN T

Ages 4 and over. Be astounded as Karlheinz the Bubbleman creates one incredible soap bubble after another.

**MON, AUG 12 • 2:00-2:30PM**  
Regent Place Branch

**TUE, AUG 13 • 10:30-11:00AM**  
Connaught Branch

**TUE, AUG 13 • 2:00-2:30PM**  
Albert Branch

**WED, AUG 14 • 10:30-11:00AM**  
Sunrise Branch

**WED, AUG 14 • 2:00-2:30PM**  
Central Children's

**THU, AUG 15 • 10:30-11:00AM**  
George Bothwell Branch

**THU, AUG 15 • 2:00-2:30PM**  
Glen Elm Branch

**FRI, AUG 16 • 10:30-11:00AM**  
Sherwood Village Branch

**FRI, AUG 16 • 2:00-2:30PM**  
Prince of Wales Branch

### IT'S A WILD, WILD WORLD T

Ages 4 and over. Enjoy nature through interactive puppetry and song with Juno nominees LuLu and the TomCat.

**MON, AUG 19 • 2:00-2:30PM**  
Regent Place Branch

**TUE, AUG 20 • 10:30-11:00AM**  
Connaught Branch

**TUE, AUG 20 • 2:00-2:30PM**  
Albert Branch

**WED, AUG 21 • 10:30-11:00AM**  
Sunrise Branch

**WED, AUG 21 • 2:00-2:30PM**  
Central Children's

**THU, AUG 22 • 10:30-11:00AM**  
George Bothwell Branch

**THU, AUG 22 • 2:00-2:30PM**  
Glen Elm Branch

**FRI, AUG 23 • 10:30-11:00AM**  
Sherwood Village Branch

**FRI, AUG 23 • 2:00-2:30PM**  
Prince of Wales Branch

### POWWOW DANCING: STORYTELLING THROUGH MOVEMENT T

Ages 5 and over. Discover how powwow dancers tell stories using movement and powwow regalia. Enjoy demonstrations and interactive activities with Teddy Bison.

**MON, AUG 26 • 2:00-2:30PM**  
Regent Place Branch

**TUE, AUG 27 • 10:30-11:00AM**  
Connaught Branch

**TUE, AUG 27 • 2:00-2:30PM**  
Albert Branch

**WED, AUG 28 • 10:30-11:00AM**  
Sunrise Branch

**WED, AUG 28 • 2:00-2:30PM**  
Central Children's

**THU, AUG 29 • 10:30-11:00AM**  
George Bothwell Branch

**THU, AUG 29 • 2:00-2:30PM**  
Glen Elm Branch

**FRI, AUG 30 • 10:30-11:00AM**  
Sherwood Village Branch

**FRI, AUG 30 • 2:00-2:30PM**  
Prince of Wales Branch





## GAME NIGHT **D**

Come with a friend or parent and play some fun table-top games. Learn to play chess, bring your own game, or use our collection of classic board games.

WED, JUN 5-AUG 28 • 7:00-8:30PM  
Glen Elm Branch

## YOUTH READINESS CERTIFICATE COURSE **R**

Are you 14 or 15 years old and interested in starting working? You will need to complete Youth Readiness Certificate Course. Presented with the Gabriel Dumont Institute Training & Employment.

WED, JUN 5 • 6:30-8:30PM  
Sherwood Village Branch

## HOMEWORK HELP **D**

Grades 4 to 12 and GED students are welcome to drop in and get some help with Math, Science, English Language Arts, and Social Studies. Please bring appropriate books and assignment instructions.

TUE JUN 4-18 • 6:30-8:30PM  
Sunrise Branch

WED JUN 5 AND 12 • 7:00-8:30PM  
Glen Elm

## FINISH A 3D-PRINTED PROP **R**

Ages 14 to 18. Take a 3D-printed object from raw plastic to a refined and finished prop in this hands-on workshop. 3D prints provided.

SUN, JUN 9 • 1:00-4:30PM  
Albert Branch

## GAME AND WATCH **D**

Enjoy playing and watching video games on the big theatre screen with your friends!

TUE, JUN 18, JUL 16 AND AUG 20 •  
6:00-8:30PM  
Film Theatre

## DIGITAL VISION BOARDS FOR TEENS **D**

Create an inspirational digital collage to help you visualize your hopes, dreams, and goals!

WED, JUN 19 • 7:00-8:30PM  
George Bothwell Branch

## PRIDE TIE DYE SOCKS **R**

Ages 12-17. Learn to tie-dye rainbow socks in celebration of PRIDE month. Please bring a pair of white socks.

WED, JUN 26 • 7:00-8:00PM  
George Bothwell Branch

## CONNECT WITH YOUR TEEN

Connect with the teen in your life by spending quality time together, learning something new. Please register yourself and your teen (age 12 and over).

## GAME NIGHT **D**

Come with a friend or a parent and play some fun table-top games. Games available include Settlers of Catan, Munchkin, Dominion, Carcassonne, Apples to Apples, and Bang!

WED, JUN 5-AUG 28 • 6:30-8:30PM  
Regent Place Branch



## GREAT MASTERS AND INVENTORS **D**

Discover the world through exciting activities on select Tuesday afternoons. You will explore art, technology, history, science and culture at Regina Public Library and Dunlop Art Gallery.

TUE, JUL 9, JUL 23, AUG 6 AND AUG 20  
• 2:00-4:00PM  
Central Adult

## MAKEY MAKEY **R**

Ages 12 and over. Learn how to turn fruit into a piano, make Play-Doh into a game pad, or turn juice boxes into a beat box with the Makey Makey, an easy-to-use invention kit.

THU, JUL 4 • 1:00-2:30PM  
Connaught Branch

THU, JUL 25 • 10:30-12:00PM  
Glen Elm Branch

## TEEN PAINT NIGHT: FROG AND BUTTERFLIES **R**

Ages 12 and over. Learn painting techniques while creating a painting of a frog perching around butterflies. Supplies provided. No experience necessary.

THU, JUL 11 • 7:00-8:30PM  
George Bothwell Branch



## CODING WITH GOIT **R**

Ages 11 to 15. Work alongside industry experts to complete hands-on, project-based challenges and build a mobile app to solve a problem. Lunch and snacks provided. Plan to attend both days.

SAT, JUL 13 AND SUN, JUL 14  
• 10:00-4:30PM  
George Bothwell Branch

## SAGE HILL TEEN WRITING CAMP **R**

Attention aspiring teen writers! Don't miss this intensive week-long writing camp with instruction from professional writers. Please register directly with Sage Hill at [www.sagehillwriting.ca/teens](http://www.sagehillwriting.ca/teens)

MON, JUL 15-FRI, JUL 19 • 10:00-4:30PM  
Sherwood Village Branch

## BUILDING A FERRIS WHEEL: TEEN STEM CHALLENGE **R**

Ages 12 to 17. Use engineering and creative skills to design and build a rotating ferris wheel made from Popsicle sticks.

WED, JUL 17 • 2:00-3:30PM  
George Bothwell Branch

## EMOJI PILLOWS **R**

Ages 13 to 18. Make your own emoji pillow to celebrate World Emoji Day. All materials supplied.

WED, JUL 17 • 7:00-8:00PM  
Regent Place Branch

## SIDEWALK POETRY **D**

Ages 12 to 17. Learn about public poetry and street art while exercising your inner poet.

TUE, JUL 23 • 2:00-3:00PM  
Prince of Wales Branch



## GLITCH ART **D**

Play with coding and image formatting to create fantastically glitched artworks.

TUE, JUL 23 • 7:00-8:30PM  
Central Adult

## MANDALA STONE PAINTING FOR TEENS **R**

Mandala stones are colorfully dotted patterns painted on smooth round rocks. These designs are eye-catching and easy to recreate. All supplies provided. Teens only please.

WED, JUL 24 • 2:00-3:30PM  
Sunrise Branch

TUE, JUL 30 • 7:00-8:30PM  
Connaught Branch

## MAKE A BEAT WITH GARAGE BAND **R**

GarageBand is a music creation studio that works on all apple devices. Learn how to use it to make some great music! Headphones helpful but not required.

SUN, JUL 28 • 2:00-3:00PM  
Central Adult

## TEEN HENNA TATTOOS **R**

Ages 10 to 16. Learn how to make temporary tattoos using henna. Discover how to create patterns and designs with simple shapes to make beautiful body art. Supplies provided.

SUN, JUL 28 • 2:00-3:00PM  
Glen Elm Branch



## STOP MOTION ANIMATION **R**

Ages 12 to 17. Explore stop motion animation using technology and a little creativity.

WED, JUL 31 • 6:30-8:30PM  
Prince of Wales Branch

## LIGHT UP BOOKMARKS **R**

Ages 12 to 17. Learn to fuse science with art while exploring how electricity and conductive thread works. Make a light-up bookmark to take home. All supplies provided.

SUN, AUG 11 • 1:30-3:30PM  
Prince of Wales Branch

WED, AUG 28 • 6:30-8:30PM  
Connaught Branch

## GENERATION GIF **D**

Ages 12 to 17. Design a GIF and learn about the graphics interchange format that has taken the digital world by storm.

TUE, AUG 20 • 2:00-4:00PM  
Prince of Wales Branch

**R** Registration Required

**D** Drop-In Program

Registration opens at noon on May 24.

## DUNLOP ART GALLERY PROGRAMS

	CC • Central Children's Library	CA • Central Library	AL • Albert Branch	CO • Connaught Branch	GB • George Bothwell Branch	GE • Glen Elm Branch	PU • Prince of Wales Branch	RP • Regent Place Branch	SU • Sherwood Village Branch	SU • Sunrise Branch	Page
Art and Ideas		<b>D</b>			<b>D</b>					<b>D</b>	26
Art and Science: The Experiment		<b>D</b>									38
Art of the Book					<b>D</b>						38
The Art of Papermaking					<b>D</b>						25
By the Book					<b>D</b>						26
Cheryl Rondeau and Saimaiyu Akasuk: Ice Spider	<b>D</b>										38
Death Threat: An evening with artists Vivek Shraya and Ness Lee	<b>D</b>										30
Film School: Buster Keaton	<b>D</b>				Film Theatre						26
Film School: Human Rights	<b>D</b>				Film Theatre						31
Image & Sound: Cinematography Sound Recording Techniques	<b>D</b>										31
Jay White: Coyote Walk	<b>D</b>										39
Keith Bird: Spiritual Veterans									<b>D</b>		38
Not Your Average Paint Night	<b>D</b>							<b>D</b>			33
Off-Centre: Queer Contemporary Art in the Prairies	<b>D</b>								<b>D</b>		39
Padded Accordion Note Book					<b>D</b>						30

## FILM THEATRE PROGRAMS

48-Hour Filmmaking Challenge:Launch	<b>D</b>										32
48-Hour Filmmaking Challenge:Submission	<b>R</b>										32
48-Hour Filmmaking Challenge:Screening	<b>D</b>										32

## INDIGENOUS

Kokum-in-Residence		<b>D</b>									36
National Indigenous People's Day	<b>D</b>									City Square Plaza	36

## FEATURED

Business, Careers and Personal Finance											34-35
Indigenous Programs											36
PRIDE Programs											28
Sounds of Summer Reading											33



**R** Registration Required

**D** Drop-In Program

Registration opens at noon on May 24.

	CC • Central Children's Library	CA • Central Library	AL • Albert Branch	CO • Connaught Branch	GB • George Bothwell Branch	GE • Glen Elm Branch	PLU • Prince of Wales Branch	RP • Regent Place Branch	SU • Sherwood Village Branch	SU • Sunrise Branch	Page
<b>CONNECT</b>											
Adult Chess	D										27
Book clubs	R/D	D	D			R/D	D	D	D		24
Book Trivia Night	D										30
Calling All Amateur Radio Fans							D				26
Cardstock Creations								R			31
Celebrate Seniors							D				25
Divas Do It Again: Jewelry Swap							R				32
Film Critic Fun				D							31
Garden Games Party						D					31
Hot Topics	D										26
Ink Prints Writing Group						R					26
Introduction to Video Editing with Adobe Premiere Pro	R										33
Meditation Yoga					D						25
Reading Circle For All								D			32
Rhubarb Leaf Stepping Stone									R		27
Sounds of Summer Reading				D							27
Stitch, Make and Chat			D	D	D			D	D		25
Therapy Dogs	D										27
<b>LEARN</b>											
3D Printing and Modeling Basics	R										32
Ancestry Discovery				R				R			25
Ancestry Library Edition For Beginners								R			31
Basic Bicycle Maintenance	R			R							27
Community Deathcare				D							25
Create Your Own Floral Corsage									R		27
Camping Basics for Newcomers				R							27
Drop-in Help for EAL Learners	D										37
EAL Group Tutoring Sessions	R			R	R		R	R	R		37
English Skills for Adult EAL Learners			D								37
Family Law Clinic	D										26
FLK Taoist Tai Chi Workshop									D		31
Finding Folk for Music	D										31
Garden Painting						R					31
Get Together with Technology	D										27
Going Zero Waste							D				31
Henna Body Art					R						31
How To Create An Ad On Kijiji and Varage Sale	R										30
How to VLOG like a YouTuber	R										31
Intro to Jiu Jitsu			R			R					31
Intro to Permaculture			D			D					27
Intro to the Ukulele			R			R					27
Joy Class										R	26
Make a Mug		R									32
Make a Zine		D									30
Modern Hand Stitching										R	32
Mixing 101	R										25
Night Time Photography Techniques								D			26
Photoshop Basics	R										33
Preserving and Understanding the Past: Archaeology in SK	D										33
Sir Frederick William Haultain: Politician and Judge	D										26
Social Media Essentials	D										27
Starting a Basic Freshwater Aquarium				D							33
Summer Goddess					R						27
Thrive Walk-in Counselling	D	D									26
What's In The Digital Media Studio?	D										30



# ADULT PROGRAMS

Registration opens at noon on May 24.

## BOOK CLUBS

### LITERACY BOOK CLUB **D**

Have fun reading and discussing short stories with the help of an experienced volunteer instructor. For adult ESL students, adults who struggle with literacy, and adults who enjoy a short story.

SUN, JUN 2-AUG 25 • 2:00-3:30PM  
Regent Place Branch

TUE, JUN 4-18 • 7:00-8:30PM  
Albert Branch  
Central Adult

### WAR BOOK CLUB **D**

War has shaped our history and our world. Join an informal discussion of books about military history.

TUE, JUN 4 • 7:00-9:00PM  
Central Adult

### PRINCE OF WALES BOOK CLUB **D**

WED • 7:00-8:00PM  
JUN 5: *Lion* (book vs. film discussion)  
JUL 3: *When Breath Becomes Air* by Paul Kalanithi  
AUG 14: *The Table of Less Valued Knights* by Marie Philips  
Prince of Wales Branch

### FEMINIST KILLJOY CLUB **D**

Join a discussion of pop culture, literature and politics with a feminist lens in a safe and inclusive setting.

Topic: Fatherhood

SUN, JUN 9 • 2:00-3:00PM  
Central Adult

Do you enjoy reading and talking about books? Share your love of reading by joining one of RPL's book clubs. New members are always welcome!



### SHERWOOD VILLAGE BOOK CLUB **D**

*Educated* by Tara Westover

TUE, JUN 11 • 7:00-8:30PM  
Sherwood Village Branch

### CONNAUGHT OPEN BOOK CLUB **D**

Have a book you are longing to share? Want to get recommendations from other readers? Connect with other readers as you share and discuss your favorite books.

TUE, JUN 11, JUL 9 AND AUG 13  
• 7:00-8:00PM  
Connaught Branch

### COOK BOOK CLUB **R**

Connect with other local foodies and share your recommended recipes from a cookbook you love.

JUN 12: *Something Sweet*  
JUL 17: *Something Savoury*  
AUG 21: *A Cherished Family Recipe*

WED • 7:00-8:00PM  
Prince of Wales Branch

### SUNRISE BOOK CLUB **D**

*The Alice Network* by Kate Quinn  
WED, JUNE 12 • 07:00-8:30PM  
Sunrise Branch

### MURDER BY THE BOOK **D**

Murder by the Book is a group that meets once each month to discuss mystery fiction. Come prepared to chat about a book, but never tell who actually "did it"!

TUE, JUNE 18 • 7:00-9:00PM  
Central Adult

# ADULT PROGRAMS

Registration opens at noon on May 24.

## OUTREACH SERVICES BOOK CLUB **R**

An audio book club for those living with a vision loss. Register at 306-777-6019.

WED • 2:00-3:00PM

JUN 26: *A Beauty* - Connie Gault

JUL 31: *The Confabulist* - Steven Galloway

AUG 28: *A Man Called Ove* - Fredrik Backman

Outreach Services

## UNDER THE COVERS BOOK CLUB **D**

WED • 7:00-8:30PM

JUN 26: *Gap Creek* - Robert Morgan

JUL 31: *Still Life* - Louise Penny

AUG 28: *Extreme Vinyl Café* - Stuart McLean

Sunrise Branch

## REGENT PLACE BOOK CLUB **D**

THU • 7:00-8:00PM

JUN 27: *The Flying Carpet of Small Miracles* - Hala Jaber

JUL 25: *Early One Morning* - Ginny Baily

AUG 22: *The Back of the Turtle* - Thomas King

Regent Place Branch

## STITCH, MAKE AND CHAT **D**

Socialize while you work on your beading, knitting, scrapbooking, cross-stitch or other projects. No session Jun 30 and Aug 4.

SAT, JUN 1-AUG 31 • 1:00-4:00PM

Connaught Branch

SUN, JUN 2-AUG 25 • 2:00-4:00PM

Sherwood Village Branch

TUE, JUN 4-AUG 27 • 1:00-3:00PM

George Bothwell Branch

WED, JUN 5-AUG 28 • 1:00-3:00PM

Sunrise Branch

THU, JUN 6-27 • 7:00-8:30PM

Glen Elm Branch

## MIXING 101 **R**

Learn about mixing concepts, techniques, and tools for sound design, production, and catalogs in this hands-on program in RPL's digital media studio. Teens welcome.

SUN, JUN 2 • 1:00-4:00PM

Digital Media Studio

## THE ART OF PAPERMAKING **D**

Join Helen O'Connor for a papermaking demonstration. Learn how to form sheets of paper from various plants, weeds, oriental fibres, cotton linens and recycled papers.

SUN, JUN 2 • 1:00-4:00PM

George Bothwell Branch

## MEDITATION YOGA **D**

Experience the peace of mental silence through guided meditation and learn techniques to balance yourself from within. Email [sahajayogaregina@gmail.com](mailto:sahajayogaregina@gmail.com) to register. No session Jun 30 and Aug 4.

SUN, JUN 2-AUG 25 • 2:30-4:00PM

Glen Elm Branch

## CELEBRATE SENIORS **D**

Meet new friends and try new activities at this weekly activity group for seniors. Activities may include guest speakers, fibre arts, paper crafts, and more.

WED, JUN 5-AUG 28 • 1:15-3:15PM

Regent Place Branch

## COMMUNITY DEATHCARE **D**

Join this 2-part program to learn about Community Deathcare, a movement that reclaims our relationship with death and join a death cafe to discuss death and life. Presented by Denise Seguin Horth.

WED, JUN 5 AND 12 • 7:00-8:00PM

George Bothwell Branch

## ANCESTRY DISCOVERY **R**

Discover your family story. Learn to use Ancestry Library Edition database, a powerful search tool available to RPL customers, to get started on your genealogy project. Please attend both sessions.

THU, JUN 6 AND 13 • 2:00-3:00PM

George Bothwell Branch

WED, AUG 14 AND 21 • 7:00-8:30PM

Sunrise Branch

## FILM SCHOOL: BUSTER KEATON **D**

This four-part film series presents and discusses the films of Buster Keaton, focusing on the ageless comedies that still get laughs a hundred years later. Presented by filmmaker Brian Stockton.

*The Cameraman*  
THU, JUN 6 • 6:30-9:00PM

*Spite Marriage*  
THU, JUL 4 • 6:30-9:00PM  
Film Theatre

## THRIVE WALK-IN COUNSELLING **D**

Family Service Regina's walk-in counselling service is a FREE, immediate, accessible form of counselling. Sessions are approximately 60 minutes.

WED, JUN 5-AUG 28 • 1:00-6:00PM  
Central Library

FRI, JUN 7-AUG 30 • 1:00-5:00PM  
Albert Branch

## BY THE BOOK **D**

Enjoy a tour of the Art of the Book display, and an informal viewing of works by Saskatchewan members of the Canadian Bookbinders and Book Artists Guild.

SAT, JUN 8 • 2:00-3:30PM  
George Bothwell Branch

## JOY CLASS **R**

Join Marilyn Kurtz for a relaxation session focusing on cultivating joy by smiling, breathing deep, giggling, and other fun exercises.

SUN, JUN 2 • 1:00-2:00PM  
Sunrise Branch

## FAMILY LAW CLINIC **D**

Applying to court for child support, custody/access or divorce? Need help with the court forms and process? Get free assistance from volunteer lawyers. Call 1-855-833-7257 for more information.

MON, JUN 10 AND 24 • 5:30-8:30PM  
Central Adult

## HOT TOPICS **D**

Join us monthly for exciting and relevant conversations about current events and red-hot issues led by guest speakers from the community. Topics will be announced one week in advance of the event.

TUE, JUN 11, JUL 9 AND AUG 6  
• 7:00-8:30PM  
Film Theatre

## SIR FREDERICK WILLIAM HAULTAIN: POLITICIAN AND JUDGE **D**

Learn about Sir Frederick William Haultain, the first premier of the Northwest Territories and a long-serving Canadian politician. Presented by Dr. Ken Leyton-Brown from the University of Regina.

WED, JUN 12 • 7:00-8:00PM  
Central Adult

## NIGHT TIME PHOTOGRAPHY TECHNIQUES **D**

Discover the world of night time photography. Join Joel Bortnick, camera expert from London Drugs, to learn techniques for taking night pictures.

WED, JUN 12 • 7:00-8:00PM  
Sherwood Village Branch

## CALLING ALL AMATEUR RADIO FANS **D**

Join the Regina Amateur Radio Association once a month to gain general and specialized information useful for ham radio enthusiasts. The club welcomes all interested individuals.

WED, JUN 12 • 7:00-8:30PM  
Regent Place Branch

## ART AND IDEAS **D**

This monthly presentation series will guide you through artistic movements, styles, materials, and processes giving you a better understanding of art and art history.

*Dada and Surrealism*  
WED, JUN 12 • 6:00-7:00PM  
Central Library

*Abstract Expressionism  
and Pop Art*  
TUE, JUL 30 • 6:00-7:00PM  
Sunrise Branch

*Abstract Expressionism  
and Pop Art*  
THU, AUG 29 • 6:00-7:00PM  
George Bothwell Branch

## INK PRINTS WRITING GROUP **R**

Connect with an ongoing writing group of emerging authors to engage in free-writing prompts and exercises, get feedback on new work, and share a sample of your writing. New members welcome!

THU, JUN 13, JUL 11 AND AUG 8  
• 7:00-8:00PM  
Prince of Wales Branch



# ADULT PROGRAMS

Registration opens at noon on May 24.

## ADULT CHESS **D**

Do you want to play chess? Begin with a short lesson and then have fun practicing your new skills. Chess sets will be provided. Offered with the Saskatchewan Scholastic Chess Association.

SAT, JUN 15 AND 22 • 2:00-4:00PM  
Central Adult

## CREATE YOUR OWN FLORAL CORSAGE **R**

Learn the design principals and construction basics of floral wearables. Create a corsage and boutonniere yourself using fresh flowers with the help of a local professional. Cost recovery \$10.00.

WED, JUN 19 • 6:30-8:30PM  
Sunrise Branch

## INTRO TO PERMACULTURE **D**

Learn about the design principals of permaculture from local expert Jenine Kozey and discover a whole different way of seeing your environment.

WED, JUN 19 • 7:00-8:30PM  
Prince of Wales Branch

WED, AUG 21 • 7:00-8:30PM  
Connaught Branch

## CAMPING BASICS FOR NEWCOMERS **R**

Learn about camping basics as a newcomer to Canada; from things to pack, to things to do while camping, and how to stay safe. Presented by camping enthusiast Tony Neal.

THU, JUN 20 • 7:00-8:00PM  
George Bothwell Branch

## THERAPY DOGS **D**

Feeling stressed? Take the afternoon off, unwind, relax and spend sometime with a friendly therapy dog. Presented in partnership with St. John Ambulance.

SAT, JUN 22 • 2:00-4:00PM  
Central Adult

## GET TOGETHER WITH TECHNOLOGY **D**

Take part in this peer to peer technology support group for people with vision loss, supported by the Vision Impaired Resource Network and the Canadian Council for the Blind. Register at 306-777-6019.

SAT, JUN 22 • 2:00-4:00PM  
Outreach Services

## RHUBARB LEAF STEPPING STONE **R**

Socialize with your community while you make a rhubarb leaf stepping stone. Please bring along rhubarb or large hosta leaves if possible; all other supplies provided. Workshop will be outdoors.

SUN, JUN 23 • 12:30-1:30 OR 2:30-3:30PM  
Sunrise Branch

## SOUNDS OF SUMMER READING **D**

Start your summer off in style! RPL staff will share book recommendations while the Regina Symphony Orchestra's Gordon Gerrard plays piano with music to match. Reception to follow.

THU, JUN 27 • 7:00-8:30PM  
George Bothwell Branch

## BASIC BICYCLE MAINTENANCE **R**

Learn the basics of how to keep your bicycle in tip-top running order. We'll have plenty of time for questions and answers too. Presented by Bert Seidel from Western Cycle.

SAT, JUN 29 • 2:00-3:00PM  
Central Adult

THU, JUL 4 • 7:00-8:00PM  
George Bothwell Branch

## SOCIAL MEDIA ESSENTIALS **D**

In honour of World Social Media Day, we present Social Media Essentials. We'll talk about safety tips, how social media affects our lives, and go over some of the basic platforms.

SUN, JUN 30 • 2:00-3:30PM  
Central Adult

## INTRO TO THE UKULELE **R**

Learn the basics of the ukulele with Regina Ukulele Club and discover the library's instrument lending service. Limited number of instruments provided. If you have a ukulele, please bring it.

WED, JUL 3 • 7:00-8:30PM  
Connaught Branch

WED, JUL 24 • 7:00-8:30PM  
Prince of Wales Branch

## SUMMER GODDESS **R**

Learn how to make homemade skin care products that will let our inner goddess shine this sandal season. Supplies provided.

THU, JUL 4 • 7:00-8:00PM  
Glen Elm Branch

# PRIDE PROGRAMS



## BUTTERFLY WINGS FOR QUEEN CITY PRIDE PARADE **R**

In celebration of Queen City Pride Festival, create colourful butterfly wings. Then wear your wings as you march with RPL in the parade. All materials supplied. Families and teens welcome!

**SAT, JUN 8 • 1:00-3:00PM**  
George Bothwell Branch  
Sunrise Branch

**SUN, JUN 9 • 2:00-4:00PM**  
Connaught Branch  
Sherwood Village Branch

**TUE, JUN 11 • 6:00-8:00PM**  
Central Adult

## COME JOIN THE PARADE! **D**

Join Regina Public Library in the Queen City Pride Parade. Wear your butterfly wings creations and let your pride soar. Parade begins at noon. Please arrive early for staging. Everyone welcome!

**SAT, JUN 15 • 12:00-1:00PM**

## QUEEN CITY PRIDE ART EXHIBIT

Submission Deadline: May 31.

This is an open call to those who identify with the LGBTQ2 community to submit artwork that explores and celebrates Gender and Sexually Diverse (GSD) identities and experiences. In partnership with Queen City Pride.

Guidelines:

- Two-dimensional artwork must not exceed 36 inches in any dimension.
- Three-dimensional artwork must not exceed 18 inches in any dimension.
- Submit to Dunlop Art Gallery, c/o Wendy Peart by May 31, 2019.

**JUN 10-JUL 30**  
Central Library



## COMING OUT PARTY **D**

Get together, celebrate and tell your coming out story! Share poems, diary entries or tell a story. All ages and identities are welcomed!

**MON, JUN 10 • 7:00-9:00PM**  
Central Adult

## PRIDE SOCIAL HOUR **D**

Join us at the Hotel Saskatchewan lounge to connect with other people attending Pride events in a relaxed environment.

**WED, JUN 12 • 5:30-6:30PM**  
Hotel Saskatchewan

## BOOKS THAT BUILD PRIDE **D**

Join Jane Knox from PFLAG Regina (Parents and Friends of Lesbians and Gays) to discover the ways books can help engage in conversations about sensitive topics.

**WED, JUN 12 • 6:30-7:00PM**  
Sherwood Village Branch

## PRIDE SOCIAL HOUR - NOON EDITION **D**

Connect with people attending Pride events in the city in a relaxed environment. Light refreshments provided.

**THU, JUN 13 • 12:00-1:00PM**  
Central Adult



# THE ART OF PRIDE A QUEEN CITY PRIDE ART EXHIBIT

See your art at the library.  
Submit artwork that celebrates  
LGBTQ2 experiences to Dunlop  
Art Gallery by May 31.

Exhibit runs on the 2nd  
floor of Central Library  
from June 10 to July 30.

[reginalibrary.ca/dunlop-art-gallery](http://reginalibrary.ca/dunlop-art-gallery)





# ADULT PROGRAMS

## RPL STAFF PICKS

Not sure what to check out next?  
Here are a few of our favourites!



Art 149: Untitled,  
Don McVeigh

Robyn from Dunlop Art Gallery is loving this piece by Canadian artist Don McVeigh. The image is a multi-directional sign utilizing feathers as the way-points. It is centered on a vibrant yellow background covered in brushstrokes that give the illusion of motion. For her, this piece offers a sense of adventure and curiosity for all the past and future choices in life you make to shape your destination.

### WHAT'S IN THE DIGITAL MEDIA STUDIO? **D**

Did you know RPL has a Digital Media Studio at our Central Branch? Curious about what is in it and what can you do there? Discover how you can use the studio to make music, videos and more!

SAT, JUL 6 • 11:00-12:00PM  
Digital Media Studio

### PADDED ACCORDION NOTE BOOK **D**

Create a beautiful padded covered note book with hand-painted cloth and a unique folded accordion style book. Led by book-maker Leann Clifford.

SAT, JUL 6 • 1:00-4:00PM  
George Bothwell Branch

### MAKE A ZINE **D**

Engage in analog info-sharing. Produce a self-published, special-interest booklet on any topic, using original or appropriated text and images. Teens, ages 16 and over, are welcome.

SUN, JUL 7 • 1:00-4:30PM  
Albert Branch

### DEATH THREAT: AN EVENING WITH ARTISTS VIVEK SHRAYA AND NESS LEE **D**

On the occasion of their hot-off-the-press publication *Death Threat* artists Vivek Shraya and Ness Lee join us for a reading and conversation about their recent artistic collaboration, which includes a commissioned art work on the windows of Central Library. Using satire and surrealism, the book *Death Threat* is an unflinching portrayal of violent harassment from the perspective of both the perpetrator and the target, illustrating the dangers of online accessibility, and the ease with which hatred can be digitally spread.

SUN, JUL 7 • 6:30PM  
RPL Film Theatre  
Central Library

### HOW TO CREATE AN AD ON KIJJI AND VARAGE SALE **R**

Marie Kondo-ing your house and need to get rid of some things? Learn how to sell them on Kijiji or Varage Sale. Please bring pictures of your item on a flash drive if possible.

MON, JUL 8 • 7:00-8:30PM  
Central Adult

### BOOK TRIVIA NIGHT **D**

Calling all trivia enthusiasts and book lovers! We're hosting a fun, prize-filled evening of book trivia. Bring your team (Max 6 people) and get ready to win! Hosted at Bushwakker Brewpub.

*Harry Potter*  
WED, JUL 10 • 7:00-9:00PM

*Game of Thrones*  
WED, AUG 7 • 7:00-9:00PM

## GOING ZERO WASTE **D**

Learn about going zero-waste and finding ways to minimize your impact on the environment.

THU, JUL 18 • 7:00-8:00PM  
Regent Place Branch

## CARDSTOCK CREATIONS **R**

Create unique, handmade all-purpose greeting cards in a relaxed environment. Supplies provided.

SUN, JUL 21 • 2:00-4:00PM  
Sherwood Village Branch

## FILM CRITIC FUN **D**

Do you love movie reviews, and discussing movies? Be a film critic while you socialize. Come ready to discuss the remake of The Lion King. Light refreshments served.

THU, JUL 25 • 7:00-8:00PM  
George Bothwell Branch

## FINDING FOLK FOR MUSIC **D**

Learn about sound recording, deep listening and experimental music composition. We will collect sounds and play on musical instruments, forming an ensemble to create a new kind of ambient folk music. Bring a lunch.

SAT, JUL 27 • 10:00-4:00PM  
Central Adult

## GARDEN GAMES PARTY **D**

Learn to play classic games and enjoy the sunshine in the Prince of Wales Garden. July: Crokinole August: Boardgames. Teens welcome.

SAT, JUL 27 • 2:00-4:00PM  
SAT, AUG 24 • 2:00-4:00PM  
Prince of Wales Branch

## GARDEN PAINTING **R**

Using brush and ink, learn to draw flora and fauna in a beautiful garden space.

SUN, JUL 28 • 1:00-3:00PM  
SUN, AUG 25 • 1:00-3:00PM  
Prince of Wales Branch

## ANCESTRY LIBRARY EDITION FOR BEGINNERS **R**

Discover your family story. In this introductory session, you will learn how to use the Ancestry Library Edition database for genealogy research.

TUE, JULY 30 • 7:00-8:30PM  
Sherwood Village Branch

## FILM SCHOOL: HUMAN RIGHTS **D**

This series explores the important work of contemporary documentary filmmakers in the ongoing global struggle for human rights across nations and cultures. *Human Flow*

THU, AUG 1 • 6:30-9:00PM  
Film Theatre

## HENNA BODY ART **R**

Experiment with henna paste, learn to create beautiful patterns using simple shapes and motifs and make temporary designs on your skin. Supplies provided.

THU, AUG 1 • 7:00-8:00PM  
Glen Elm Branch

## IMAGE & SOUND: CINEMATOGRAPHY SOUND RECORDING TECHNIQUES **D**

Get hands-on with a camera, lights, a light meter and sound recording equipment to learn how to craft a scene and make it look and sound exactly as you want.

THU, AUG 8 • 6:30-8:30PM  
Central Adult

## INTRO TO JIU JITSU **R**

Discover the martial art of Jiu-Jitsu. Learn the fundamental movements and philosophy from local experts Michael Yee and Nolan Collar. Beginners welcome.

SAT, AUG 10 • 1:00-2:30PM  
Prince of Wales Branch

SAT, AUG 17 • 1:00-2:30PM  
Connaught Branch

## FLK TAOIST TAI CHI WORKSHOP **D**

Learn more about the benefits of this gentle exercise program that combines body, mind and spirit. The workshop, presented by Regina FLK Taoist Tai Chi Society, will be held outdoors by the pond

SUN, AUG 11 • 1:30-3:00PM  
Sunrise Branch

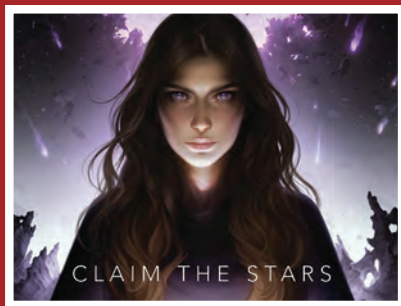
## HOW TO VLOG LIKE A YOUTUBER **R**

Learn the video part of vlogging. In this workshop we'll cover everything you'll need to know from cameras, lighting and shooting styles to final edits and uploads.

MON, AUG 12 • 7:00-8:00PM  
Digital Media Studio

## RPL STAFF PICKS

Not sure what to check out next?  
Here are a few of our favourites!



*Skyward*

- Brandon Sanderson (YA Novel)

Sanderson, one of the most acclaimed fantasy writers on the scene today, removes his high-fantasy mantle in favour of a starship jumpsuit in *Skyward*. It's undoubtedly a sci-fi novel; one that finds its roots in a distinctly fantasy trope: a boy who finds and raises a dragon. Christopher Paolini's Eragon and Naomi Novik's Temeraire are wonderful examples of this trope. Now, replace boy with girl and dragon with starship. Spin, a young girl raised in the dark shadow of her father's reputation, has always wanted to be a starship pilot like him. The Defiants have been at war with the Krell for as long as humans have been on the planet Detritus and Spin is ready to get into the fight. First, she has to get into, pass, and survive flight school. Spin is determined to "seize the stars" the way her father told her to and, more importantly, uncover the truth behind why the Defiants branded him a "coward".

—Andrew W., Sunrise Branch

## ADULT PROGRAMS

### 48-HOUR FILMMAKING CHALLENGE: LAUNCH **D**

Compete in teams to create the best film with a 48-hour deadline and win a fabulous prize! The 48-hour timer begins as soon as the launch ends.

FRI, AUG 16 • 5:30-6:00PM  
Film Theatre

### 48-HOUR FILMMAKING CHALLENGE: SUBMISSION **R**

Deadline: August 18, 6:00PM.  
Please register for this event.

SUN, AUG 18 • 9:00-6:00PM  
Film Theatre

### 48-HOUR FILMMAKING CHALLENGE: SCREENING **D**

Projecting the submissions from the 48-Hour Filmmaking Challenge on the big screen. A panel of judges will decide on the winning films, and the audience will vote for the People's Choice Award.

MON, AUG 26 • 6:30-9:00PM  
Film Theatre

### READING CIRCLE FOR ALL **D**

Supported adults with limited abilities are invited to an inclusive and engaging storytime with music, stories, jokes and fun! Everyone welcome.

TUE, AUG 13 • 6:30-7:00PM  
Sherwood Village Branch

### MAKE A MUG **R**

Ages 16 and over. Learn how to make your very own ceramic mug using "pinch pot" and "slab-building" techniques. All materials supplied. Plan to attend both sessions.

SAT, AUG 17 AND 24 • 1:00-4:30PM  
Albert Branch

### 3D PRINTING AND MODELING BASICS **R**

Learn to use TinkerCAD.com to design a an object that can be printed on our 3D Printer. Bring a flash drive if you want to save your design. Teens welcome.

SAT, AUG 17 • 2:00-4:00PM  
Central Adult

### DIVAS DO IT AGAIN: JEWELRY SWAP **R**

Want to refresh your accessory wardrobe for free? Bring up to 5 gently used accessories or pieces of jewelry to swap. Doors open at 7 p.m. and swapping begins at 7:15.

WED, AUG 21 • 7:00-8:00PM  
Regent Place Branch

### MODERN HAND STITCHING **R**

Learn basic hand stitching techniques, then move on to an easy, modern embroidery beginner project. All supplies provided. Cost recovery fee of \$5

SUN, AUG 25 • 1:00-3:00PM  
Sunrise Branch



## SOUNDS OF SUMMER READING



**THURSDAY, JUNE 27**  
**7:00 TO 8:30PM**  
GEORGE BOTHWELL BRANCH



### NOT YOUR AVERAGE PAINT NIGHT

A night out with friends! This series is open to possibilities, as you learn about the colour wheel, mixing paints, a variety of techniques, and subject inspiration.

*Textured Paintings*  
THU, JUN 20 • 7:00-8:30PM  
Central Adult

*Watercolour Experiments*  
THU, AUG 15 • 7:00-8:30PM  
Regent Place Branch

### PHOTOSHOP BASICS

Learn how to correct colors, lighting, scale, crop photos, and more with Photoshop in our Digital Media Studio.

SUN, AUG 18 • 2:00-4:00PM  
Digital Media Studio

### INTRODUCTION TO VIDEO EDITING WITH ADOBE PREMIERE PRO

A walkthrough covering the basic functions and features of video editing using Premiere Pro and general editing concepts to get you started.

MON, AUG 19 • 7:00-8:00PM  
Digital Media Studio

### STARTING A BASIC FRESHWATER AQUARIUM

Learn about setting up and maintaining an aquarium for beginners with Regina Aquarium Society President Gordon Busch.

WED, AUG 21 • 7:00-8:00PM  
George Bothwell Branch

### PRESERVING AND UNDERSTANDING THE PAST: ARCHAEOLOGY IN SK

Learn about archaeology, what archaeologists do and find, and how artifacts can tell us more about the past. Presented by the Saskatchewan Archaeological Society.

WED, AUG 28 • 7:00-8:00PM  
Central Adult

## PROTECTING YOURSELF FROM MORTGAGE FRAUD **D**

This session discusses various types of mortgage fraud and how you can avoid becoming a victim.

THU, JUN 6 • 7:00-8:00PM  
Central Adult

## HOW TO BECOME A REAL SUCCESS **D**

In this leadership talk, you'll discover the four cornerstones to long term leadership success: Relationships, Equipping, Attitude, Leadership (REAL).

WED, JUN 12 • 12:00-1:00PM  
Central Adult

## HEALTH CARE AND LIVING OPTIONS FOR SENIORS **D**

Learn about housing options and government assistance for the elderly and how you can cover the costs of long-term care.

WED, JUN 12 • 7:00-8:00PM  
George Bothwell Branch

## SMALL BUSINESS GUIDE TO PST **D**

This introductory session discusses what PST is, what may be exempt from PST, who needs to be registered, information for vendors and consumers, and more.

THU, JUN 13 • 7:00-8:00PM  
Central Adult



## FINANCIAL SURVIVAL FOR ENTREPRENEURS **D**

This workshop covers topics such as tax strategies, financing, understanding financial ratios, and how to manage growth and expansion.

WED, JUN 19 • 7:00-8:00PM  
Central Adult

## INVESTMENT PRODUCTS: PROS & CONS **D**

Learn about the difference between investment types and investment structure; find out the pros and cons of each investment product and make informed decisions based on personal financial needs.

THU, JUN 20 • 7:00-8:30PM  
George Bothwell Branch

## WILLS & ESTATE PLANNING **D**

Learn about the different tools of estate planning, such as powers of attorney, wills, joint accounts, gifting, and trusts.

THU, JUN 27 • 7:00-8:30PM  
Central Adult

## INTRODUCTION TO CANADIAN PENSIONS & BENEFITS **D**

This session discusses Canadian public pensions and benefits such as CPP, OAS, GIS, when and how to apply, and what may affect these benefits.

WED, JUL 3 • 7:00-8:00PM  
George Bothwell Branch

## MANAGING DEBT AND MAKING CREDIT WORK FOR YOU **D**

Learn what credit is and how it works, good debt vs bad debt, and how to take control of your finances before they take control of you.

WED, JUL 10 • 7:00-8:30PM  
Central Adult

## FINANCIAL BASICS FOR NON-PROFIT BOARD MEMBERS **D**

This session explains the basics of financial reporting in the not-for-profit sector, roles and responsibilities of the board, donations and how they can be accounted for, and more.

THU, JUL 11 • 7:00-8:00PM  
Central Adult

### INVESTMENT PLANNING **D**

Learn about the differences among the many investment vehicles and understand personal risk tolerance

THU, JUL 18 • 7:00-8:00PM

Central Adult

### RESIDENTIAL LANDLORD AND TENANT LAW 101 **D**

This session discusses legal rights and responsibilities of landlords and tenants and related issues concerning tenancy agreement, notices, rent increase, and more.

WED, JUL 24 • 7:00-8:00PM

George Bothwell Branch

### EFFECTIVE TAX STRATEGIES **R**

This workshop discusses various tax tips you should know to legally reduce income subject to tax, maximize deductions CRA allows, and use all allowable tax credits to save money.

THU, JUL 25 • 7:00-8:30PM

Central Adult

### FINANCING YOUR START-UP **D**

This workshop discusses how you can secure funding for your start-ups and what lenders typically look for in business loan borrower.

THU, AUG 1 • 7:00-8:00PM

Central Adult



### BUYING A FRANCHISED BUSINESS **D**

This interactive session discusses the pros and cons of owning a franchise business. Topics include costs, training, support, royalties and marketing.

WED, AUG 7 • 7:00-8:30PM

Central Adult

### SAVING AND INVESTING FOR RETIREMENT **D**

This workshop explains various retirement saving and investing strategies, covering government plans, employer pensions, and non-registered investments.

THU, AUG 8 • 7:00-8:30PM

George Bothwell Branch

### TAX TIPS FOR THE SELF-EMPLOYED **D**

Learn about the different deductible expenses for self-employed people that can help you save on taxes. You'll also learn the various do's and don'ts to minimize your chance of getting audited.

THU, AUG 15 • 7:00-8:30PM

Central Adult

### FACEBOOK FOR SMALL BUSINESSES **D**

This workshop discusses how Facebook can help in marketing and promoting your small business and how to use it effectively.

WED, AUG 21 • 7:00-8:00PM

Central Adult

### CASH MANAGEMENT FOR SMALL BUSINESS **D**

This workshop explains the key concepts of cash management and operational efficiency for a small business.

THU, AUG 22 • 7:00-8:00PM

Central Adult

### STOCK INVESTING 101 **D**

This workshop walks you through the basics of stock investing including basic investing terms, how to analyze stocks, and how to buy your first stock.

THU, AUG 29 • 7:00-8:30PM

Central Adult





## KOKUM IN-RESIDENCE

Brenda Dubois is a mother and grandmother (kokum) from Muscowpetung First Nation. She will share knowledge on traditional teachings and is available to provide cultural and spiritual guidance.

THU, JUN 13, JUL 11 AND AUG 8  
• 6:00-7:45PM  
Central Adult



## NATIONAL INDIGENOUS PEOPLE'S DAY

National Indigenous Peoples Day is a day for all Canadians to recognize and celebrate the unique heritage, diverse cultures and outstanding contributions of First Nations, Inuit and Nations Métis peoples.

The Regina Public Library in partnership with the City of Regina and local businesses will be celebrating National Indigenous Peoples' Day at City Square Plaza on June 21 from 10:00 am - 2:00 pm. The celebration provides an opportunity for the community to come together and experience Indigenous culture, music and dance.

The day begins with tipi raisings and pipe ceremonies. Métis jiggers, First Nation dancers, drummers, and singers will be performing. Be sure to come hungry and enjoy our community BBQ. There will be children's activities, Indigenous crafts for sale, and opportunities to learn about Indigenous culture. Join in a round dance to conclude the event. This inclusive dance crosses all cultural lines, is inviting, exciting and warms the hearts of those that participate.

FRI, JUN 21 • 10:00AM-2:00PM  
City Square Plaza

## EAL Group Tutoring Sessions **R**

EAL practice with an RPL tutor to improve listening, speaking, reading and writing skills. Learn new vocabulary in a small group setting. Literacy programs are open to learners registered with Literacy Services. You can register by visiting the circulation desk at any branch. No programs July 1.

**SAT, JUN 1-AUG 31**

• 10:30AM-12:00PM AND 1:30-3:00PM

**MON, JUN 3-AUG 26**

• 1:30-3:00PM AND 7:00-8:30PM

**TUE, JUN 4-AUG 27**

• 1:30-3:00PM AND 7:00-8:30PM

**WED, JUN 5-AUG 28**

• 1:30-3:00PM AND 7:00-8:30PM

**THU, JUN 6-AUG 29**

• 7:00-8:30PM

Central Library

**SAT, JUN 1-AUG 31 • 10:30AM-12:00PM**

**WED, JUN 5-AUG 28 • 7:00-8:30PM**

Regent Place Branch

**TUE, JUN 4-AUG 27 • 7:00-8:30PM**

Sunrise Branch

**WED, JUN 5-AUG 28 • 1:00-2:30PM**

Sherwood Village Branch

**WED, JUN 5-AUG 28 • 7:00-8:30PM**

**FRI, JUN 7-AUG 30 • 1:30-3:00PM**

George Bothwell Branch

**THU, JUN 6-AUG 29 • 7:00-8:30PM**

Glen Elm Branch

## English Skills for Adult EAL Learners **D**

Work with an experienced volunteer EAL tutor to practice and improve your English reading, writing, speaking and listening skills.

**WED, JUN 5-19 • 1:30-3:00PM**

Albert Branch

## Drop-in Help for EAL Learners **D**

Are you an EAL learner needing some extra help? RPL volunteers are available on Tuesday and Thursday evenings in the Literacy Unit. Come with your questions, assignments, documents or paperwork.

**TUE, JUN 4-18 • 7:00-8:30PM**

**THU, JUN 6-20 • 7:00-8:30PM**

Central Adult



## BE THE DIFFERENCE

Opportunities available for  
literacy tutors.

**VOLUNTEER@REGINALIBRARY.CA**

## KEITH BIRD: SPIRITUAL VETERANS

Curated by Wendy Peart, Curator

Regina-based Saulteaux and Cree artist Keith Bird crafts traditional ceremonial objects like drums, incorporating painting and sculpture to honour Indigenous leaders and warriors past and present. His newest body of work celebrates the spirituality, strength, and resilience of Indigenous veterans.

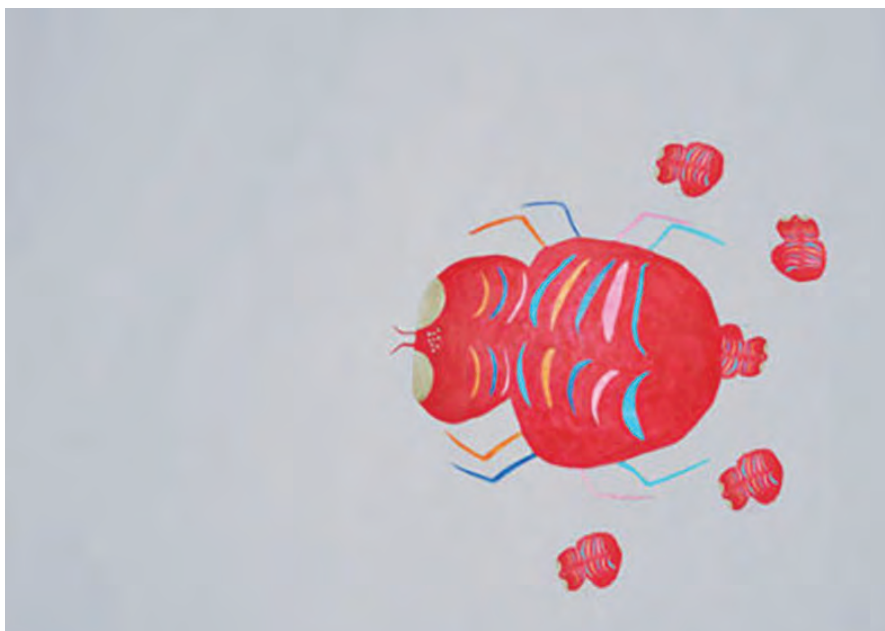
MAY 4 - JUN 16  
Sherwood Gallery

## THE EXPERIMENT

Curated by Jennifer Matotek, Director/Curator and Wendy Peart, Curator

Using strategies aligned with scientific, geographic, and other methodologies, the group exhibition *The Experiment* brings together artists who work in collaborations with nature and rely on natural processes to make their work. The selected artists generate conditions where at various points during their work's creation, the pieces begin to develop according to the laws of nature without artist intervention or alteration. The exhibition brings up questions around where the artifice of the artist's hand ends and the natural world begins, tying to conversations around nature and the environment as well as debates around labour. *The Experiment* reminds viewers of the existence of entities that are larger and more powerful than human forces, encouraging closer looks at the natural world.

MAY 17 - JUN 29  
Central Gallery



Cheryl Rondeau and Saimaiyu Akesuk, *Ice Spider*, 2018, video. Image: courtesy of Vtape.

## CHERYL RONDEAU AND SAIMAIYU AKESUK: ICE SPIDER

Curated by Blair Fornwald, Curator, Moving Image and Performance

*Ice Spider* is a stop-motion animated sci-fi tale by Saimaiyu Akesuk of Cape Dorset and Cheryl Rondeau of Toronto, referencing the behaviour of the Arctic Wolf Spider, whose population and predatory, cannibalistic tendencies have increased with climate change.

MAY 17 - JUL 11  
Central Mediatheque

## ART OF THE BOOK

Organized by the Canadian Bookbinders and Book Artists Guild, BC Chapter, Victoria

*Art of the Book* is a juried exhibit held every five years. It is celebrating its 35th Anniversary with a cross-Canada tour, featuring 67 pieces. Categories include fine binding, box-making, papermaking, fine printing, paper decorating, restoration, calligraphy, and artists' books.

MAY 18 - JUL 14  
Creation Cube,  
George Bothwell Branch



# DUNLOP ART GALLERY



Jay White, *Coyote Walk*, 2014, performance.  
Photo: Chris Huggins, participant, Vancouver.

## JAY WHITE: COYOTE WALK

Curated by Blair Fornwald,  
Curator, Moving Image and  
Performance

In *Coyote Walk*, artist Jay White will hide from other humans as he walks and camps around Regina. The walk ends prematurely if White is spotted by a human at close-range. Members of the public are invited to participate in *Coyote Walk* as trackers. Visit Central Gallery, Dunlop's Facebook page, or [reginalibrary.ca](http://reginalibrary.ca) for more information about White's performance.

FRI, JUN 21, 2:00PM TO SUN, JUN 23,  
2:00PM, REGINA

TRACKING WALK: SAT, JUN 22, 2:00PM,  
STARTING AT DUNLOP ART GALLERY

ARTIST TALK: SUN, JUN 23, 2:00PM,  
RPL FILM THEATRE



Phomohobes, *Ambiguous Reunion*, 2017, hand-cut collage. Courtesy of the artists.

## OFF-CENTRE: QUEER CONTEMPORARY ART IN THE PRAIRIES

Curated by Blair Fornwald and  
Gary Varro

This exhibition aims to destabilize urban/rural and centre/margin binaries by presenting engaging and politically relevant work by queer artists from or currently living in the Canadian Prairies. The exhibition addresses gender, sexuality and regionalism through an intersectional lens, and investigates the possibility of queering the "Prairie Gothic" aesthetic by presenting fantastical, playful, imaginary, and surreal representations of the human form.

CENTRAL GALLERY: JUL 12 TO SEP 15  
SHERWOOD GALLERY: JUN 22  
TO SEP 8

DANIEL BARROW *THE READING WAND*  
PERFORMANCE AND ARTIST

TALK: FRI, JUN 12, 7:00PM  
RPL FILM THEATRE



Cindy Baker, *Crash Pad*, 2018, performance and  
installation. Courtesy of the artist and dc3 Art  
Projects.



# BE THE DIFFERENCE

**From language tutoring to  
career coaching, discover all  
the ways to volunteer with us.**



[reginalibrary.ca](http://reginalibrary.ca)

**[VOLUNTEER@REGINALIBRARY.CA](mailto:VOLUNTEER@REGINALIBRARY.CA)**





## A contribution to your Regina Public Library helps ensure the library continues to be a place of learning, discovery and sharing of information.

Libraries are continually adapting to the needs of the communities they serve. At Regina Public Library, we add value to information, making it understandable and meaningful.

RPL is a hub for social interaction and learning, and we enrich the lives of our community members through our collections, programs and services.

Consider donating to Regina Public Library. Supporting the library builds community and makes Regina a great place to live.

To learn more, visit [reginalibrary.ca/donate](http://reginalibrary.ca/donate)



**Regina Public Library thanks its many donors for their generosity. With your support, we continue to enrich the lives of our community members through our collections, programs and services.**

South Saskatchewan Community Foundation • Canadian Home Economics Foundation • Andrew Davis • Katherine Bristow • Betty Francis • Dr. Neil Kapoor • Starla and Ben Grebinski • Elizabeth Heidt • Jeff and Nancy Barber • Elizabeth Hoffart • Eric Johnson and Deena Wahba • Cindy Kobayashi • Linda Van Havere • Gail Kruger • Wanda and Raymond Blake • Helen Molloy • Julie McKenna and Miles Newman • Greta and Bill Poole • James and Sandra Bingaman • Trevor and Norma Quinn • RBC Foundation • Elmer Brenner and Dr. Roberta McKay • Kevin and Darla Saunderson • Sean Quinlan • Barbara March-Burwell • Sharp's Audio Visual • Estate of Emily Woodward • Renu Kapoor • M. Jickling • Westridge Construction Ltd. • In Memory of Doug Hedley • Arine Roszell • In Memory of Isobel Gibbings • SaskTel Pioneers • Donald Wiks • Elaine Kivisto • Lisa Weisensel • DeVona and Angus Jukes • Paul Hartman and Martha McIntyre • Ron and Lori Jones • Gail Headington-Mitchell • Sheena Shepherd • Margaret Hammond • William McKenzie • Dr. Ashok and Dr. Kamla Verma • John Edgar • Gabrielle Hewitt-Creek • Lynda Velmer • Glen Berger • Lois Mang • Canton Branch of the Odd Fellows of Regina • Christopher Malnyk • Jaime Leonard • TD Greystone Asset Management • Lehrer Family in memory of Joyce Lehrer • Sun Life Financial • Shawne Arzab • Glenis Stadler • Regina Amateur Radio Association Inc. • Kai Hutchence • Michael and Sandra Poon Charitable Endowment Fund • Regan Meloche • In appreciation for all the services available to my kids • Many Anonymous Donors

To learn more about donating, call 306.777.6106.



# MATERIALS

## A MAXIMUM OF 100 ITEMS CAN BE CHECKED OUT ON YOUR CARD AT ANY TIME.

ITEM	LOAN PERIOD	RENEWALS	DAILY FINE	MAXIMUM FINE
Books	21 days	2	30¢	\$6.30
Children's and Literacy Materials	21 days	2	none	none
Magazines	7 days	1	30¢	\$6.30

## A maximum of 5 items from the following groups can be checked out at any given time:

Art Rental	42 days	in person only (2)	\$1.00	\$42.00
Book Club in a Bag	42 days	0	\$3.00	\$12.00
Popular Picks	10 days	0	\$1.00	\$7.00
Toys	21 days	0	none	none

## A maximum of 3 items from the following group can be checked out at any given time:

Video Games	7 days	0	\$1.00	\$7.00
-------------	--------	---	--------	--------

## A combined total of 20 items from the following groups can be checked out at any given time:

DVDs or Blu-ray	7 days	2	\$1.00	\$7.00
DVD or Blu-ray TV Series (Set)	14 days	1	\$1.00	\$7.00
Videos	7 days	2	\$1.00	\$7.00

## A combined total of 30 items from the following groups can be checked out at any given time:

CDs	21 days	2	30¢	\$6.30
Spoken Word	21 days	2	30¢	\$6.30

## One instrument can be checked out at any given time:

Musical Instruments	21 days	2	\$1.00	\$42.00
---------------------	---------	---	--------	---------

Loan periods and fines may differ for materials from special collections. To renew an item, visit [reginalibrary.ca](http://reginalibrary.ca) and login to your account, call 306.777.6000, or toll free in Canada 1.855.980.SILS (7457).

Young adult print items are fined at 20¢/day to a maximum of \$4.20. If items were lost or damaged while checked out on your library account, a \$7 non-refundable fee will be charged to your account for each item that requires replacement.



**Tired of paying overdue fines? Try our digital services.**  
Explore eBooks, eAudiobooks, streaming music  
and more at [reginalibrary.ca](http://reginalibrary.ca).

M/L-04272019

[reginalibrary.ca](http://reginalibrary.ca)



# THANK YOU!

## TO OUR VOLUNTEERS TO OUR PARTNERS AND SPONSORS

Literacy • Literacy is Fun • Homework Help • French Conversation Club • Reading, Math and Tech Buddies •  
 Ligia Linares • Street Culture Project • Regina Fire Fighters • Gerry Kerr • Ann Brigham • Vincent Murphy •  
 Saskatchewan Arts Board • Canada Council for the Arts • Canadian Heritage • SaskCulture •  
 Saskatchewan Lotteries • Creative Saskatchewan • Government of Saskatchewan • Creative City Centre •  
 Saskatchewan Filmpool Cooperative • CNIB • Regina Downtown Business Improvement District •  
 Regina Open Door Society • Neutral Ground Artist Run Centre • Saskatchewan Science Centre • Artesian •  
 Cathedral Village Arts Festival • Robyn Clay • Jenine Kozey • Saskatchewan Arts Board • Canada Council for the Arts •  
 Canadian Heritage • SaskCulture • Saskatchewan Lotteries • Creative Saskatchewan • Government of Saskatchewan •  
 Creative City Centre • Saskatchewan Filmpool Cooperative • CNIB • Regina Downtown Business Improvement District •  
 Regina Open Door Society • Neutral Ground Artist Run Centre • Saskatchewan Science Centre • Artesian •  
 Cathedral Village Arts Festival • Michael Racette • Linda Colles • Gabriel Dumont Institute • Sage Hill Writing •  
 Regina Police Service • Joel Bortnick (London Drugs) • Freddy Vandelinden (Dutch Cycle) • Jane Knox (PFLAG) •  
 Gordon Gerrard • The Regina Symphony Orchestra • Denise Stilling • Ken Leyton-Brown •  
 Saskatchewan Archaeological Society (SAS)" • Brian Ludwig • BDC • CPA Canada • Douglas Stroud •  
 Pro Bono Law Saskatchewan • Saskatchewan Ministry of Finance • Scott Sather • Western Cycle Source for Sports •  
 Robyn Clay • Jenine Kozey • Marilyn Kurtz • Calynda Triffo • Jenine Kozey • Michael Yee • Nolan Collar •

# HOURS & LOCATIONS

## CA • CENTRAL LIBRARY

2311-12th Avenue..... 306.777.6000  
 Central Children's ..... 306.777.6030  
 Dunlop Art Gallery..... 306.777.6040  
 Film Theatre..... 306.777.6104  
 Sunday..... 12:00 pm-5:00 pm  
 Monday-Thursday..... 9:30 am-9:00 pm  
 Friday..... 9:30 am-6:00 pm  
 Saturday..... 9:30 am-5:00 pm  
 Book Drop..... 24 hours/day

## AL • ALBERT BRANCH

3355-6th Avenue..... 306.777.6076  
 Sunday..... 12:00 pm-5:00 pm  
 Monday..... 9:30 am-6:00 pm  
 Tuesday/Wednesday..... 9:30 am-9:00 pm  
 Thursday..... 9:30 am-6:00 pm  
 Friday..... 9:30 am-6:00 pm  
 Saturday..... 9:30 am-5:00 pm

## CO • CONNAUGHT BRANCH

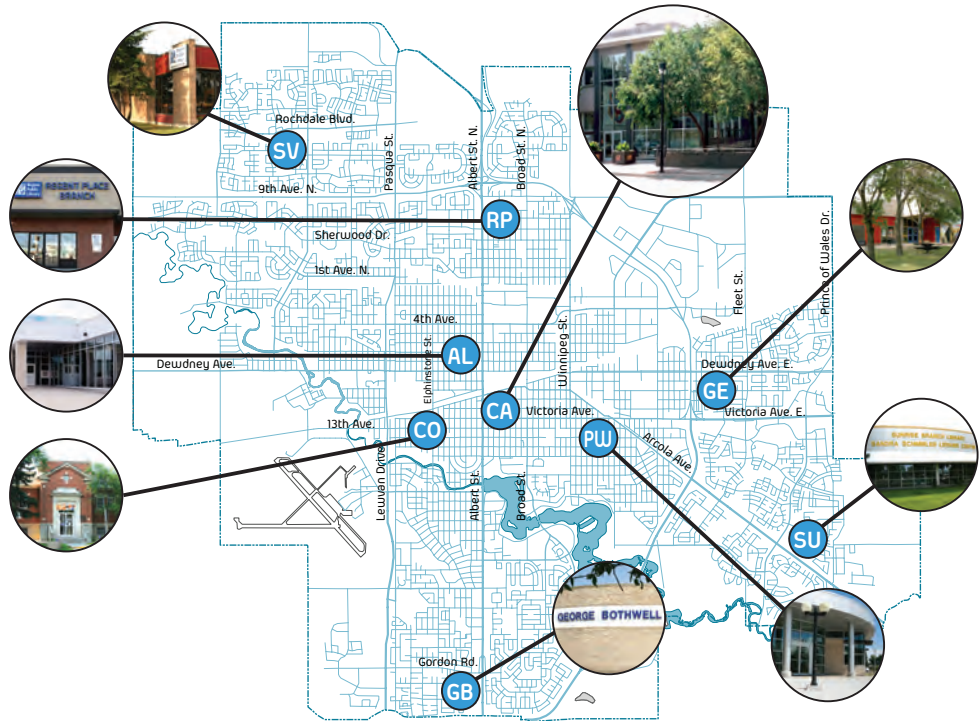
3435-13th Avenue..... 306.777.6078  
 Sunday..... 12:00 pm-5:00 pm  
 Tuesday..... 9:30 am-9:00 pm  
 Wednesday..... 1:00 pm-9:00 pm  
 Thursday/Friday..... 9:30 am-6:00 pm  
 Saturday..... 9:30 am-5:00 pm

## GB • GEORGE BOTHWELL BRANCH

Southland Mall..... 306.777.6091  
 Sunday..... 12:00 pm-5:00 pm  
 Monday..... 9:30 am-6:00 pm  
 Tuesday..... 9:30 am-6:00 pm  
 Wednesday..... 9:30 am-9:00 pm  
 Thursday..... 9:30 am-9:00 pm  
 Friday..... 9:30 am-6:00 pm  
 Saturday..... 9:30 am-5:00 pm  
 Book Drop..... 24 hours/day

## GE • GLEN ELM BRANCH

1601 Dewdney Ave. E..... 306.777.6080  
 Sunday..... 12:00 pm-5:00 pm  
 Tuesday..... 9:30 am-6:00 pm  
 Wednesday..... 1:00 pm-9:00 pm  
 Thursday..... 9:30 am-9:00 pm  
 Friday..... 9:30 am-6:00 pm  
 Saturday..... 9:30 am-5:00 pm  
 Book Drop..... 24 hours/day



## PUBLIC HOLIDAY HOURS

Monday, Jul 1

Sunday, Aug 4

Select RPL locations will be open reduced hours on Mon, Aug 5. Visit our website for individual Branch hours.

## PW • PRINCE OF WALES BRANCH

445-14th Avenue..... 306.777.6085  
 Sunday..... 12:00 pm-5:00 pm  
 Monday/Tuesday..... 9:30 am-6:00 pm  
 Wednesday/Thursday..... 1:00 pm-9:00 pm  
 Friday..... 9:30 am-6:00 pm  
 Saturday..... 9:30 am-5:00 pm

## RP • REGENT PLACE BRANCH

331 Albert Street ..... 306.777.6086  
 Sunday..... 12:00 pm-5:00 pm  
 Monday/Tuesday..... 9:30 am-6:00 pm  
 Wednesday..... 1:00 pm-9:00 pm  
 Thursday..... 9:30 am-9:00 pm  
 Friday..... 9:30 am-6:00 pm  
 Saturday..... 9:30 am-5:00 pm  
 Book Drop..... 24 hours/day

## SV • SHERWOODVILLAGE BRANCH

6121 Rochdale Blvd..... 306.777.6088  
 Sunday..... 12:00 pm-5:00 pm  
 Monday..... 9:30 am-6:00 pm  
 Tuesday..... 9:30 am-9:00 pm  
 Wednesday..... 9:30 am-9:00 pm  
 Thursday/Friday..... 9:30 am-6:00 pm  
 Saturday..... 9:30 am-5:00 pm  
 Book Drop..... 24 hours/day

## SU • SUNRISE BRANCH

3130 E. Woodhams Dr..... 306.777.6095  
 Sunday..... 12:00 pm-5:00 pm  
 Monday..... 9:30 am-6:00 pm  
 Tuesday/Wednesday..... 9:30 am-9:00 pm  
 Thursday/Friday..... 9:30 am-6:00 pm  
 Saturday..... 9:30 am-5:00 pm  
 Book Drop..... 24 hours/day



**Drop off instruments at Central Library or  
Long & McQuade (1445 McIntyre St.)**



## **DONATE A NEW OR GENTLY USED INSTRUMENT**

**Portable Keyboards • Percussion • Strings**

---

Your donation will help make music more accessible to Regina residents, through the Sun Life Financial Musical Instrument Lending Library at Regina Public Library.

# OPEN ON SASKATCHEWAN DAY

DON'T STOP AT THE BOOK DROP!  
STEP IN AND STAY



**OPEN MONDAY, AUG 5**  
**SELECT LOCATIONS**

Visit our website for details on locations,  
hours and special programming.

**RP**  
**LC** Regina  
Public  
Library

[reginalibrary.ca](http://reginalibrary.ca)



# ALEX HUTCHINSON

The Curiously Elastic Limits of Endurance

**THURSDAY, SEPT 5**

**5:30 TO 7:00PM**

**CENTRAL LIBRARY**

**[reginalibrary.ca](http://reginalibrary.ca)**







100



100

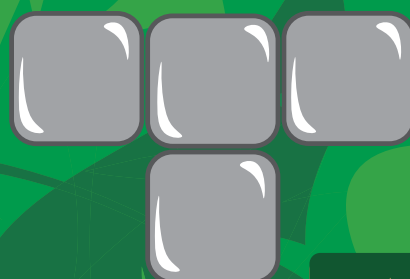
SCORE:1000



# SUMMER LEARNING PROGRAM

FOR AGES 12 AND UNDER

# LEVEL UP!



Win prizes! Explore books, comics and e-resources and discover fun, free activities to earn contest entries.

Pick up your Level Up! Kit at your favourite RPL location, from June 3 to August 31, 2019.

[reginalibrary.ca/levelup](http://reginalibrary.ca/levelup)

